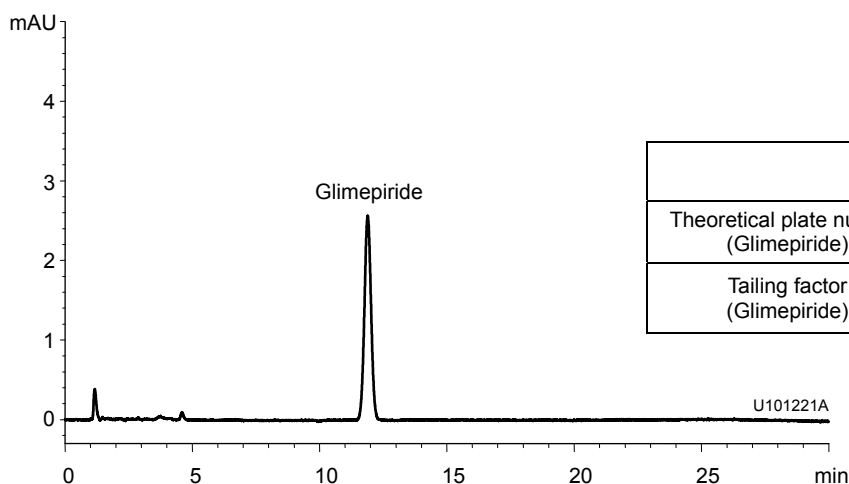


グリメピリド錠  
Glimepiride Tablets

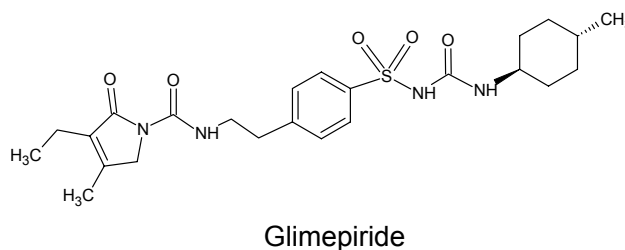
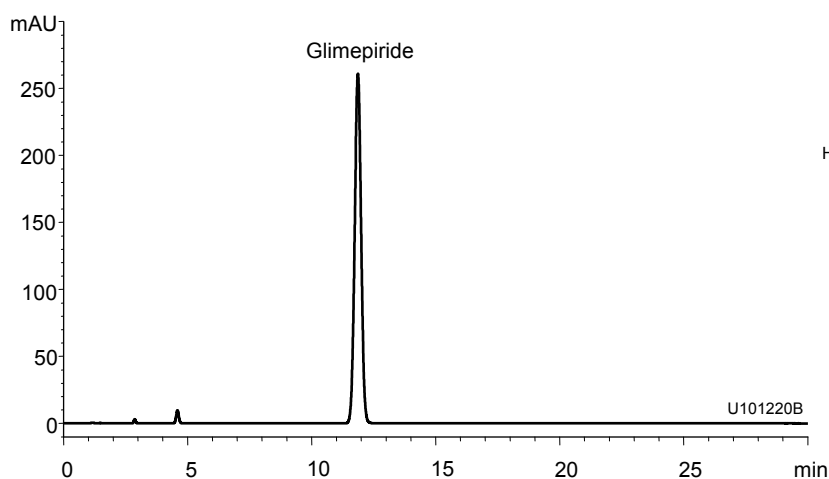
U101222A

A) Standard solution\*  
(0.0018 mg/mL Glimepiride)



	System suitability requirement	result
Theoretical plate number (Glimepiride)	$\geq 6000$	9700
Tailing factor (Glimepiride)	$\leq 1.5$	1.02

B) Sample solution\*  
(0.18 mg/mL Glimepiride)



Column : YMC-Triart C18 (5  $\mu$ m, 12 nm)  
125 X 4.0 mmI.D.

Eluent : phosphate buffer (pH 3.5)/acetonitrile (50/50)  
*phosphate buffer : dissolve 0.5 g of NaH<sub>2</sub>PO<sub>4</sub> in 500 mL water and adjust pH 3.5 with H<sub>3</sub>PO<sub>4</sub> (1 $\rightarrow$ 5)*

Flow rate : 0.75 mL/min

Temperature : 25°C

Detection : UV at 228 nm

Injection : 5  $\mu$ L

(The draft for the Japanese Pharmacopoeia; Related substances)

\* All standard and sample solutions were prepared from Glimepiride supplied as a reagent for laboratory use.