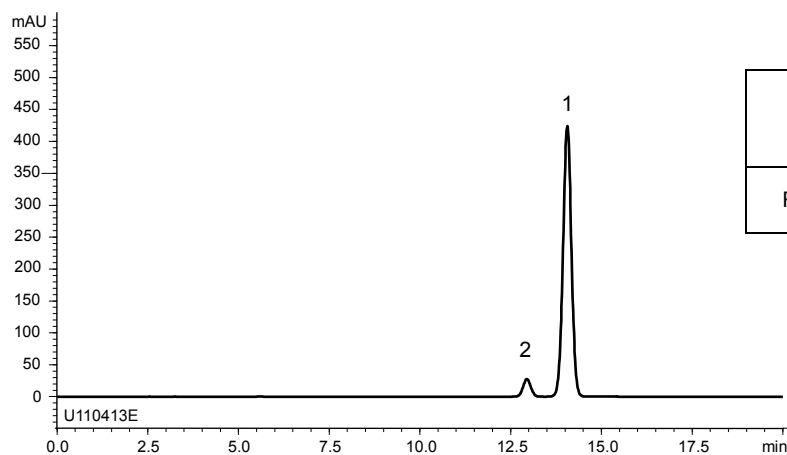


ラミブジン
Lamivudine

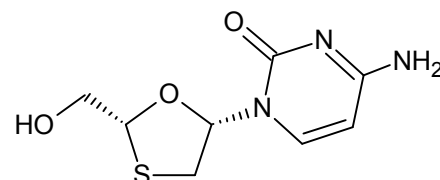
U110416A

A) System suitability solution
(0.25 mg/mL USP Lamivudine Resolution Mixture B)



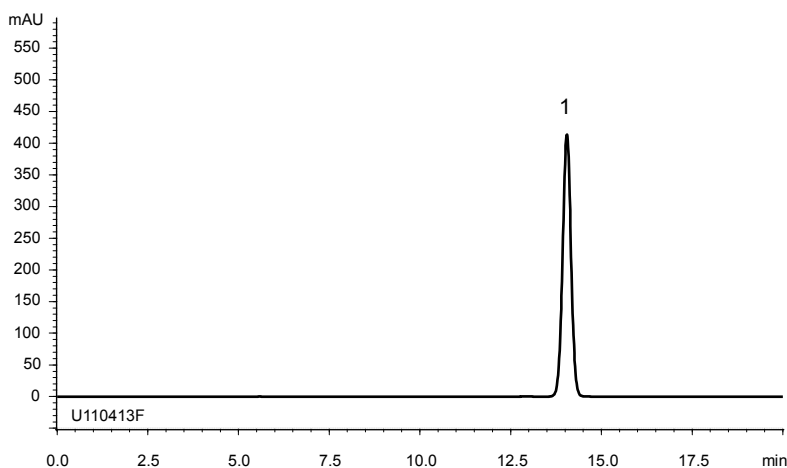
	System suitability requirement	result
Resolution (1,2)	≥ 1.5	2.72

1

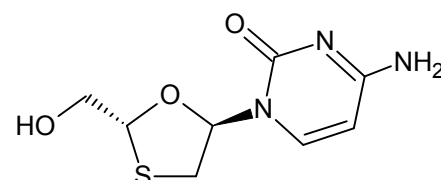


Lamivudine

B) Assay preparation
(0.25 mg/mL Lamivudine)



2



Lamivudine diastereomer

Column : YMC-Triart C18 (5 μ m, 12 nm)
250 X 4.6 mm I.D.

Eluent : methanol/buffer* (5/95)
*Dissolve 1.9 g of $\text{CH}_3\text{COONH}_4$ in 900 mL water, adjust pH 3.8 with CH_3COOH and add water to make 1000 mL.

Flow rate : 1.0 mL/min

Temperature : 35°C

Detection : UV at 277 nm

Injection : 10 μ L

(The United States Pharmacopoeia 32nd; Assay)