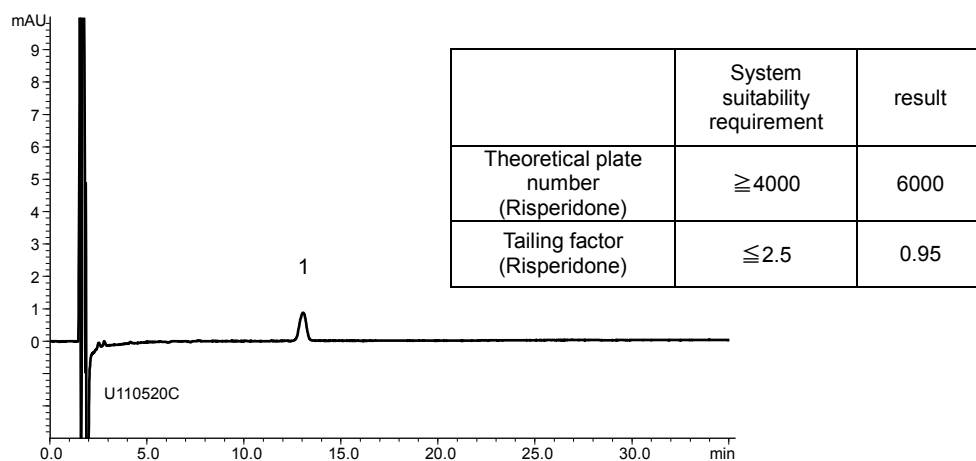


リスペリドン錠・細粒・内服液

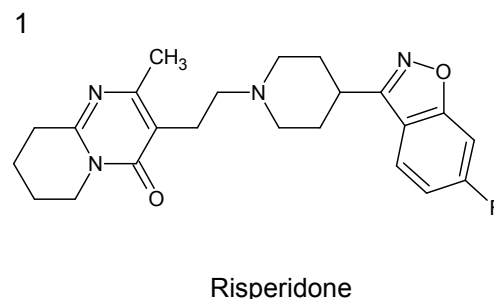
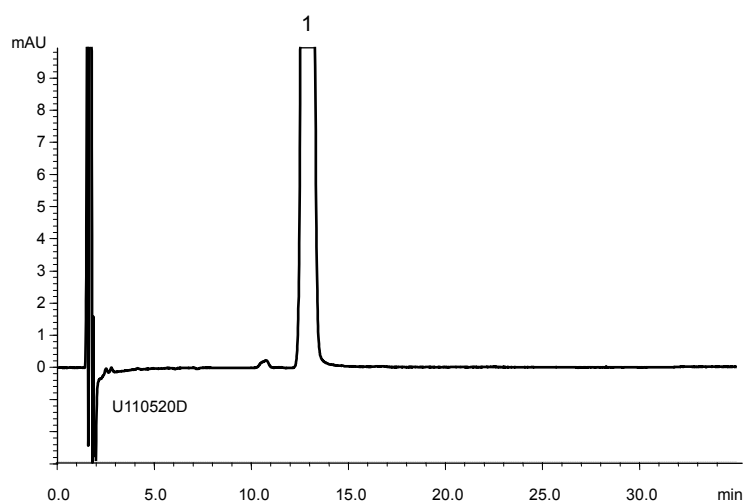
Risperidone Tablets, Fine Granules and Oral Solution

U110604B

A) Standard solution (0.001 mg/mL Risperidone)



B) Sample solution (0.1 mg/mL Risperidone)



Column : YMC-Pack ODS-A (3  $\mu$ m, 30 nm)  
150 X 3.0 mmI.D.

Eluent : acetonitrile/water/TFA (20/80/0.15) adjust pH 3.0 with 28% ammonia solution

Flow rate : 0.55 mL/min (*adjust the flow rate so that the retention time of risperidone is about 13 min*)

Temperature : 25°C

Detection : UV at 275 nm

Injection : 10  $\mu$ L

(The Japanese Pharmacopoeia 16th; Related substances)