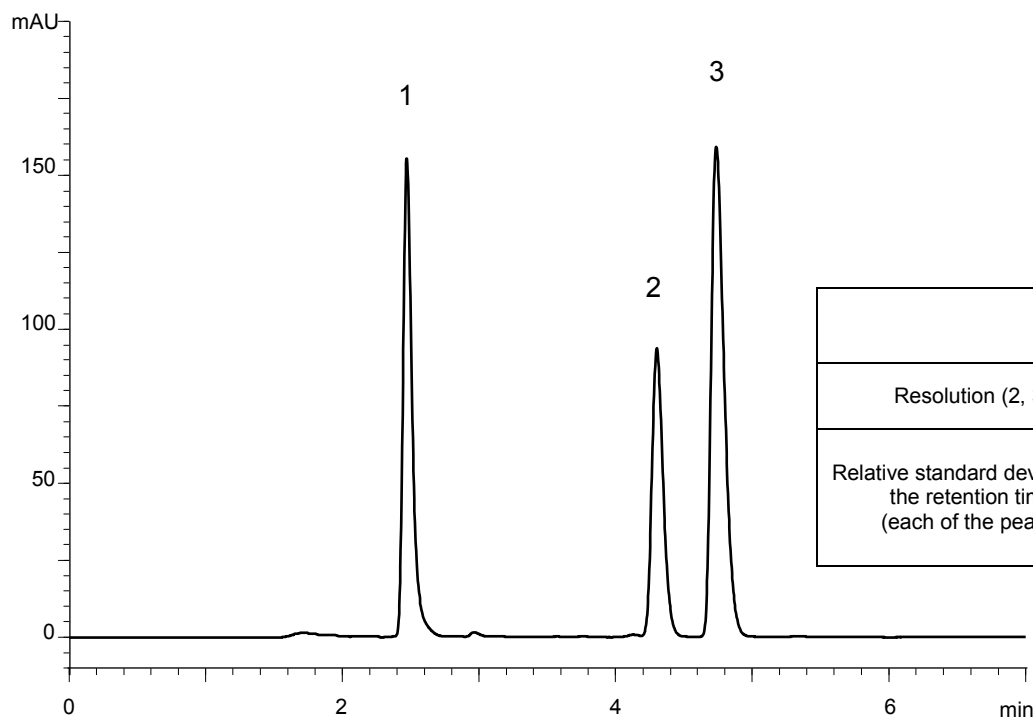


イソロイシン・ロイシン・バリン顆粒
L-Isoleucine, L-Leucine and L-Valine granules

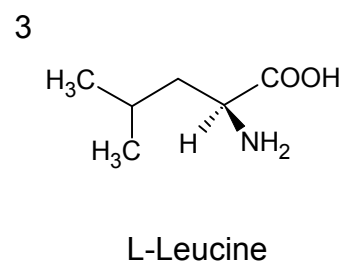
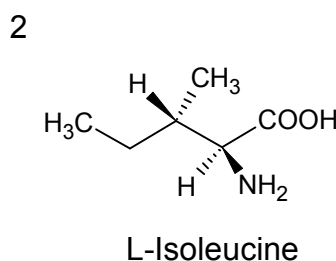
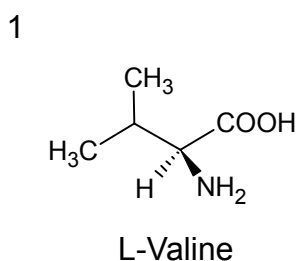
U120210A

Standard solution*¹

(1.10 mg/mL L-Valine, 0.92 mg/mL L-Isoleucine, 1.84 mg/mL L-Leucine)



	System suitability requirement	result	
Resolution (2, 3)	≥ 1.5	2.68	
Relative standard deviation of the retention time (each of the peaks)	$\leq 1.0\%$	1	0.02%
		2	0.02%
		3	0.02%



Column : YMC-Triart C18 (3 μ m, 12 nm)
150 X 4.6 mm I.D.

Eluent : phosphate buffer (pH 2.8)*²/acetonitrile (97/3)
*² Dissolve 31.2 g of NaH₂PO₄ · 2H₂O in 1000 mL of water and adjust pH 2.8 with H₃PO₄

Flow rate : 0.9 mL/min (adjust the flow rate so that the retention time of L-Valine is about 2.5 min)

Temperature : 40°C

Detection : UV at 210 nm

Injection : 20 μ L

(The Japanese Pharmacopoeia 16th; Identification)

*¹ Standard solution was prepared from L-Valine, L-Isoleucine and L-Leucine supplied as a reagent for laboratory use.