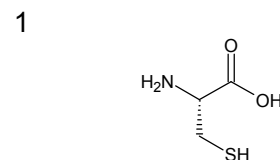
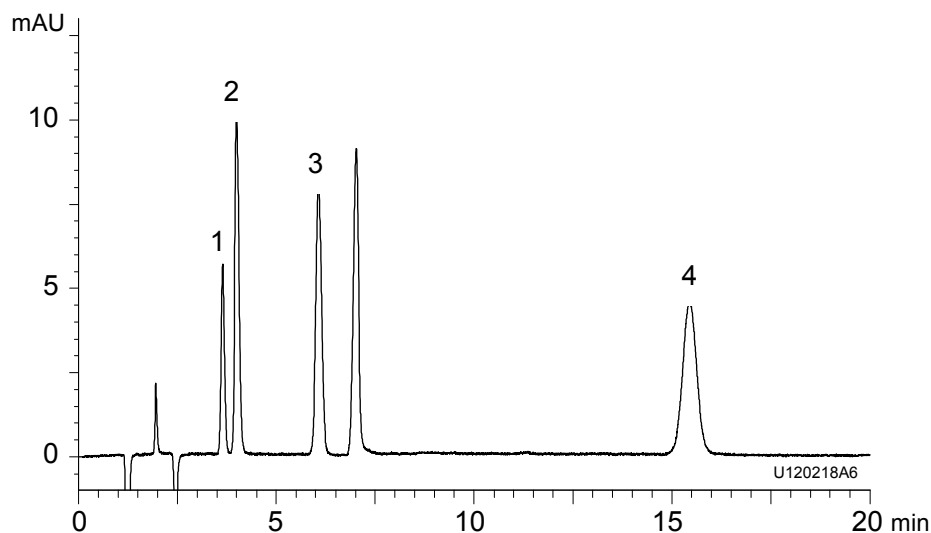


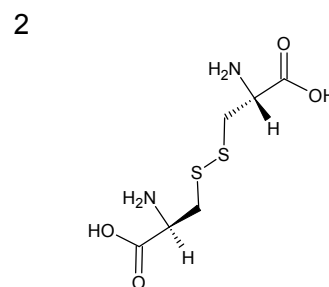
グルタチオンおよび関連化合物  
Glutathione and related compounds

U120218A

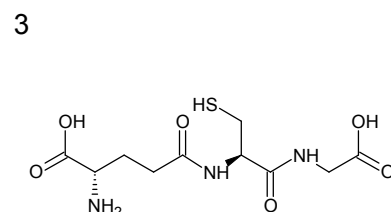
A) Sample (0.1 mg/mL)



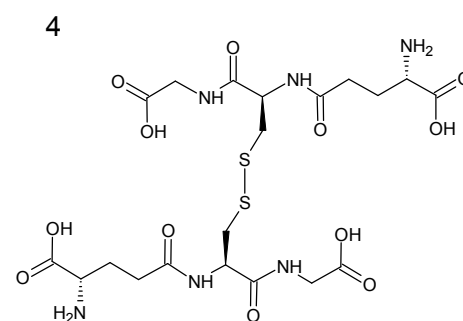
L-Cysteine



L-Cystine

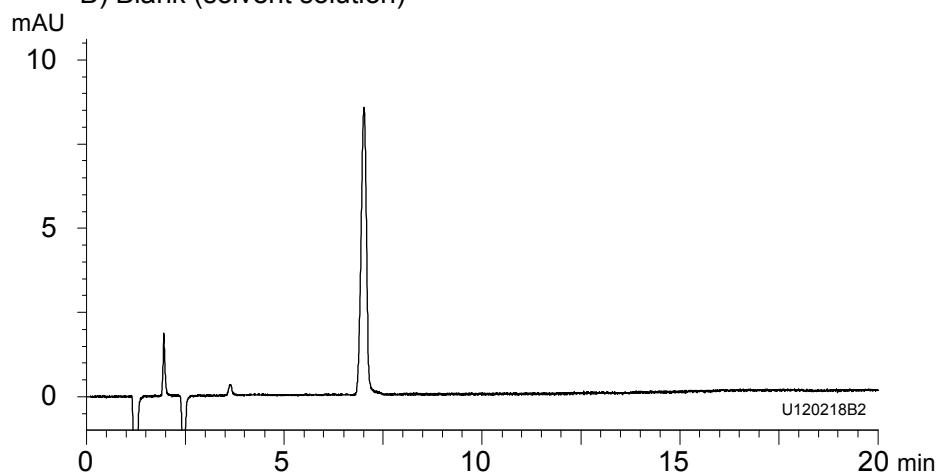


Glutathione



Glutathione disulfide

B) Blank (solvent solution)



Column	: YMC-Triart C18 (5 μm, 12 nm) 150 X 3.0 mmI.D.
Eluent	: acetonitrile/water/heptafluorobutyric acid (8/92/0.1)
Flow rate	: 0.425 mL/min
Temperature	: 30°C
Detection	: UV at 220 nm
Injection	: 2 μL