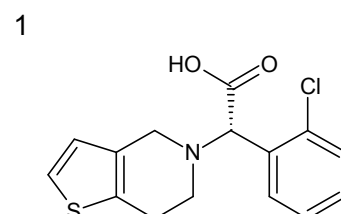
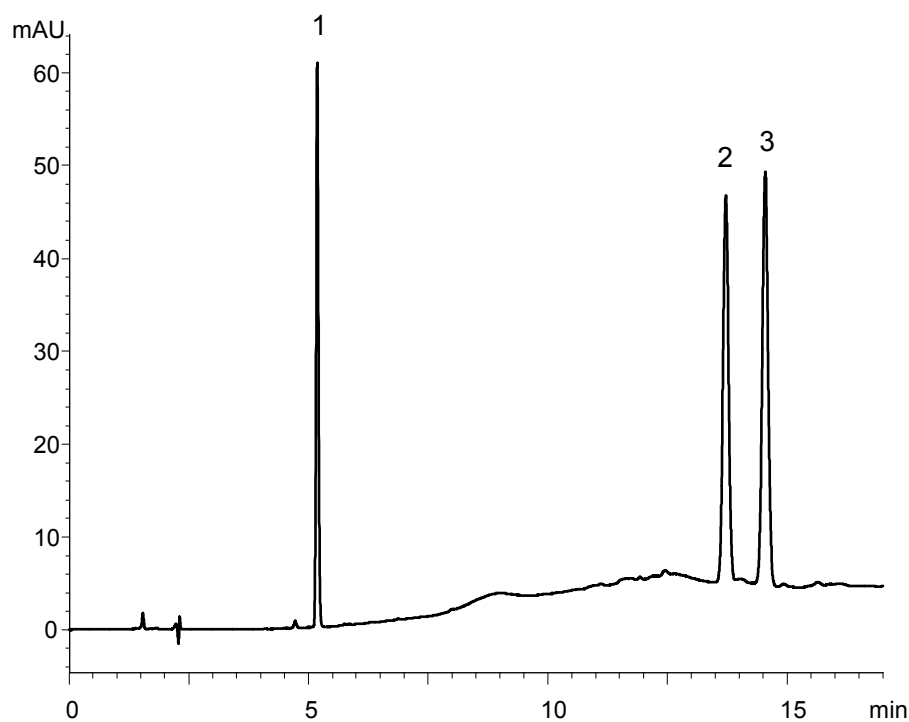
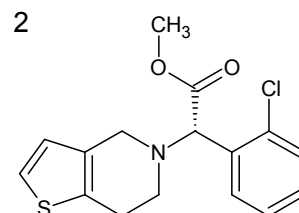


クロピドグレル及び関連化合物
Clopidogrel and related compounds

U120517E

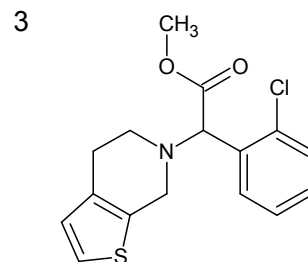


Clopidogrel carboxylic acid



• H₂SO₄

Clopidogrel sulphate



• HCl

Clopidogrel related compound B

| | |
|-------------|--|
| Column | : YMC-Triart C18 (5 μm, 12 nm) 150 X 4.0 mmI.D. |
| Eluent | : A) 20 mM KH ₂ PO ₄ -H ₃ PO ₄ (pH 2.5) B) acetonitrile 20-70%B (0-10 min), 70%B (10-17 min) |
| Flow rate | : 0.75 mL/min |
| Temperature | : 25°C |
| Detection | : UV at 220 nm |
| Injection | : 8 μL (10~20 μg/mL) |