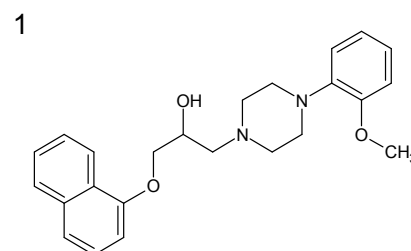
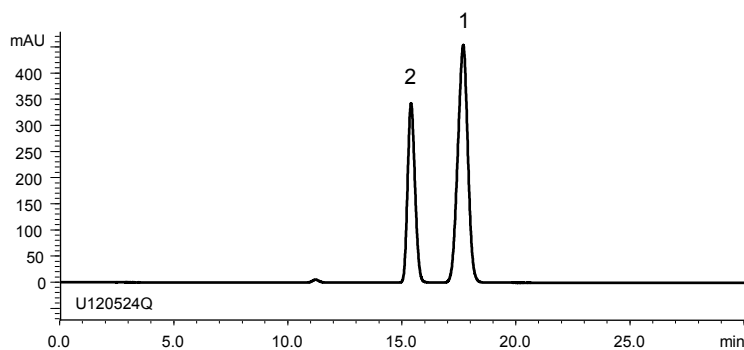


ナフトピジル錠
Naftopidil tablets

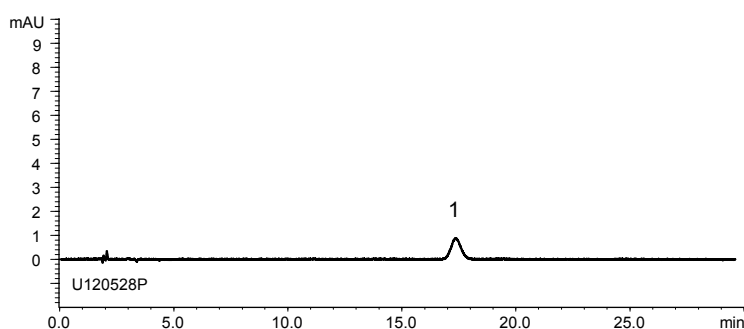
U120530A

A) System suitability solution *¹
(0.3 mg/mL 1-Naphthol, 1.0 mg/mL Naftopidil)

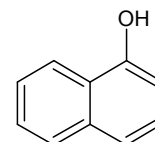


Naftopidil

B) Standard solution *¹
(0.002 mg/mL Naftopidil)

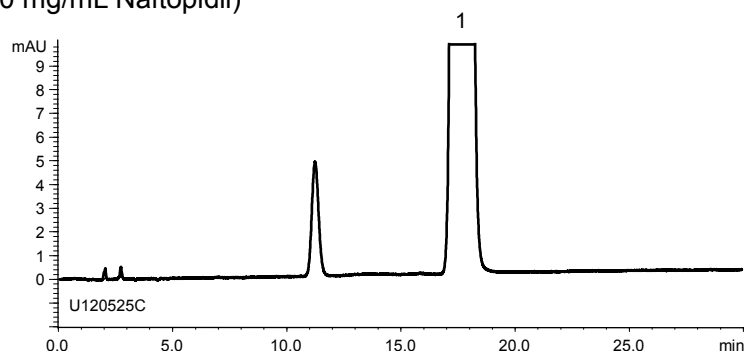


2



1-Naphthol (I.S.)

C) Sample solution *¹
(1.0 mg/mL Naftopidil)



Column : YMC-Triart C18 (5 μ m, 12 nm)
250 X 4.0 mmI.D.

Eluent : phosphate buffer (pH 4.0)*²/methanol (45/55)

*² Dissolve 6.80 g of KH_2PO_4 in 900 mL water, adjust pH 4.0 with H_3PO_4 (1 \rightarrow 10), and add water to make 1000 mL

Flow rate : 1.0 mL/min

Temperature : 25°C

Detection : UV at 283 nm

Injection : 10 μ L

(Modified conditions of The Japanese Pharmaceutical Codex; Related substances)

*¹ All solutions were prepared from Naftopidil supplied as a reagent for laboratory use.