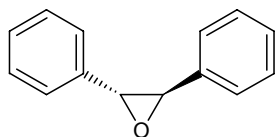


トランススチルベンオキサイド  
*trans*-Stilbene oxide

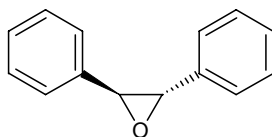
V130904J

1



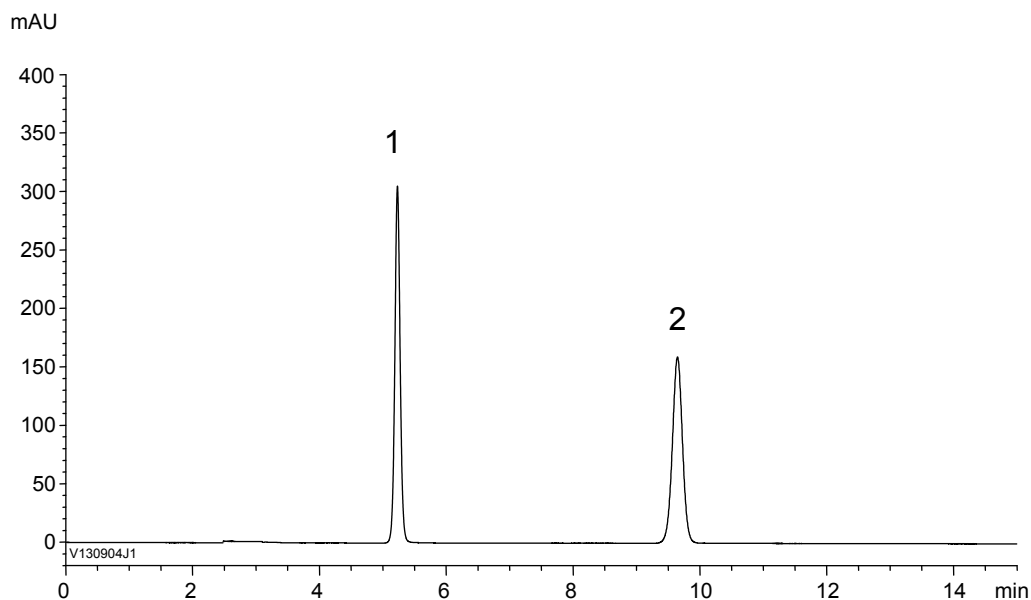
(+)-*R,R*-*trans*-Stilbene oxide

2



(-)-*S,S*-*trans*-Stilbene oxide

$\alpha$	2.9
Rs	20.4



Column : CHIRAL ART Amylose-C (5  $\mu$ m)  
250 X 4.6 mmI.D.  
Eluent : *n*-hexane/2-propanol (90/10)  
Flow rate : 1.0 mL/min  
Temperature : 25°C  
Detection : UV at 230 nm  
Injection : 5  $\mu$ L (0.1 mg/mL)