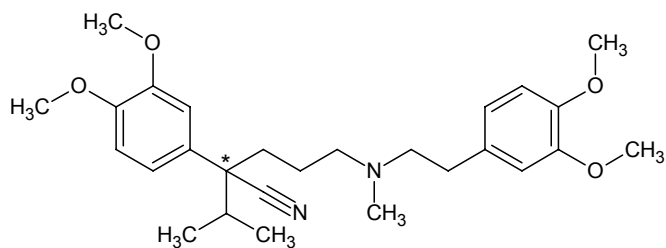
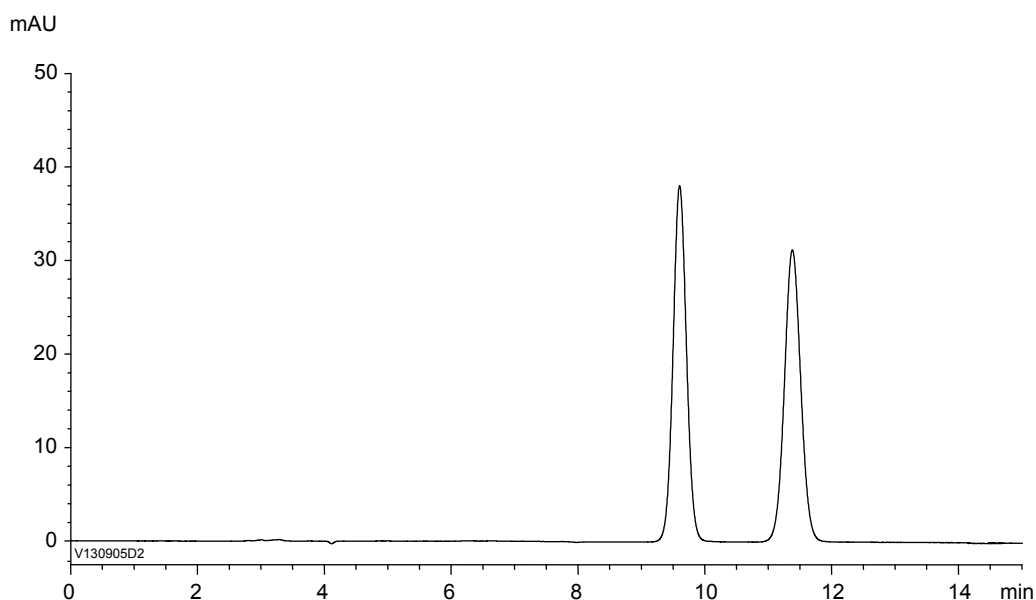


ベラパミル
Verapamil

V130905D



α	1.3
R_s	4.2



Column : CHIRAL ART Amylose-C (5 μ m)
250 X 4.6 mmI.D.
Eluent : *n*-hexane/2-propanol/diethylamine (90/10/0.1)
Flow rate : 1.0 mL/min
Temperature : 25°C
Detection : UV at 254 nm
Injection : 10 μ L (1 mg/mL)