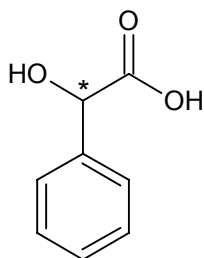
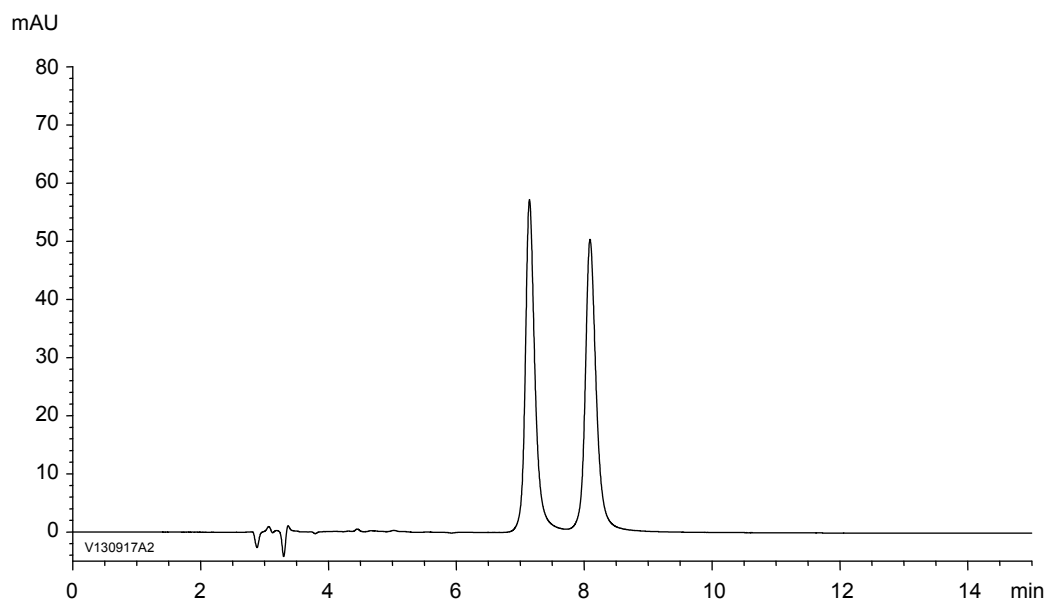


DL-マンデル酸  
DL-Mandelic acid

V130917A



$\alpha$	1.2
$R_s$	3.5



Column : CHIRAL ART Amylose-C (5  $\mu$ m)  
250 X 4.6 mmI.D.  
Eluent : *n*-hexane/2-propanol/TFA (80/20/0.1)  
Flow rate : 1.0 mL/min  
Temperature : 25°C  
Detection : UV at 254 nm  
Injection : 20  $\mu$ L (1 mg/mL)