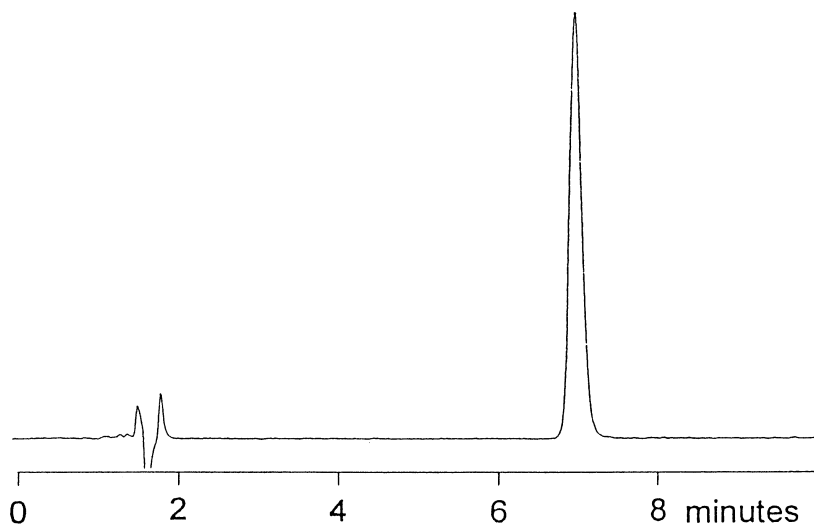
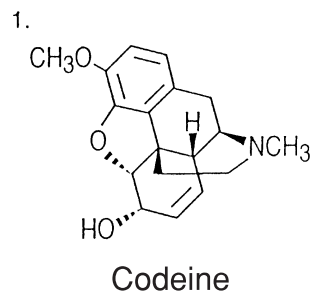


コデイン
Codeine

J010528A



Column : YMC-Pack Pro C18 (5 μ m, 12nm)
150 \times 4.6 mm I.D.
Eluent : acetonitrile/0.05% TFA (10/90)
Flow rate : 1.5 mL/min
Detection : UV at 210 nm
Injection : 5 μ L (0.1 mg/mL)