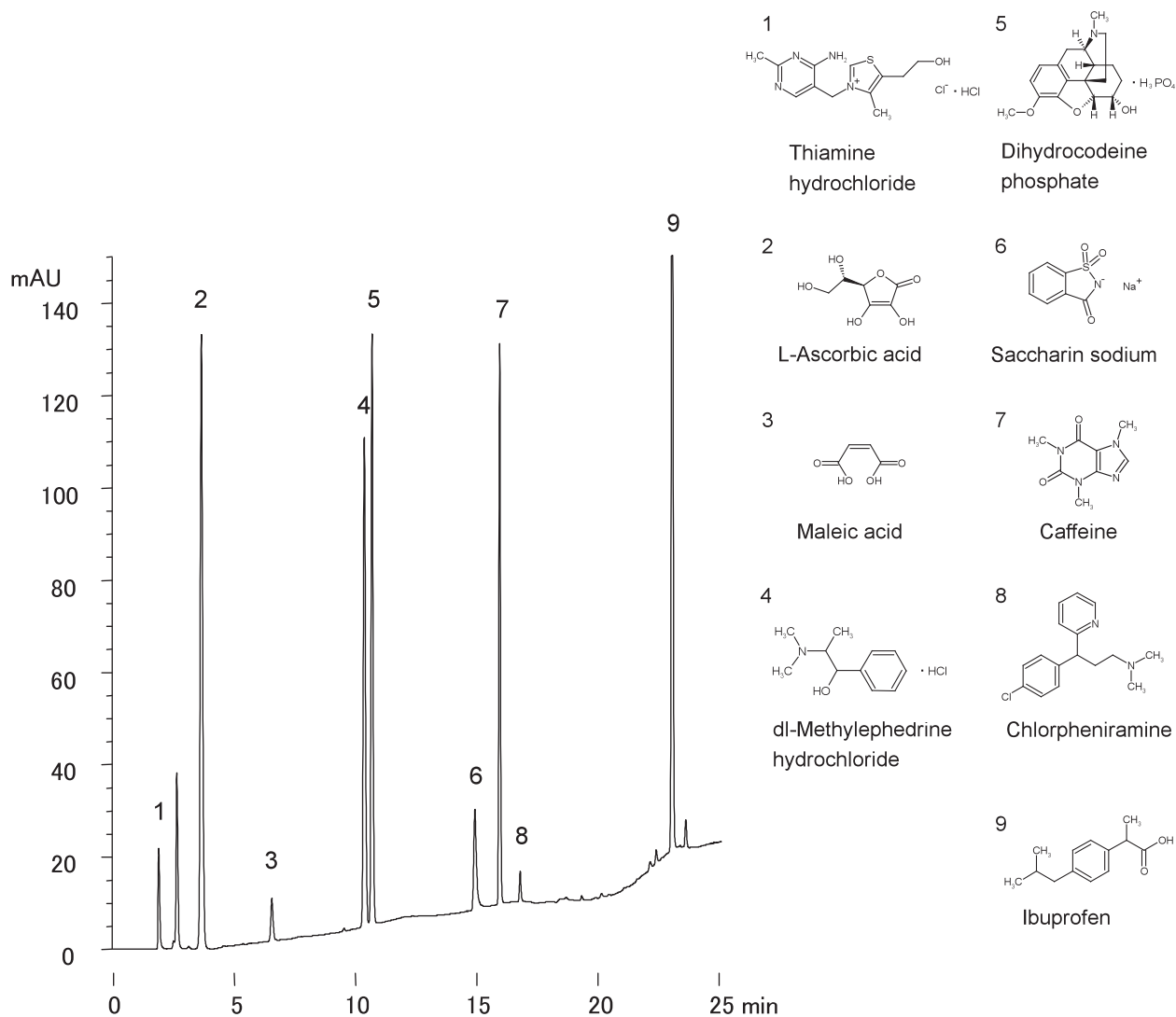


市販風邪薬

A commercial cough/cold medication

F040524B



Column : Hydrosphere C18 (5 μ m, 12nm)
150 \times 4.6 mm I.D.

Eluent : A) 20mM KH₂PO₄ - H₃PO₄ (pH 2.5)
B) methanol
0-20%B(0-10min), 20-90%B(10-20min), 90%B(20-25min)

Flow rate : 1.0 mL/min

Temperature : 37 $^{\circ}$ C

Detection : UV at 210 nm(0-12min), UV at 235 nm(12-25min)

Injection : 15 μ L (1.5 mg/mL)

Sample : 70% methanol extract of a commercially available cough/cold medication