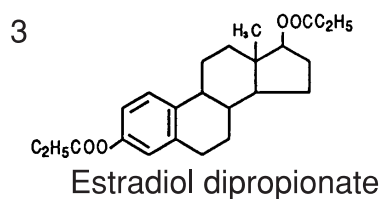
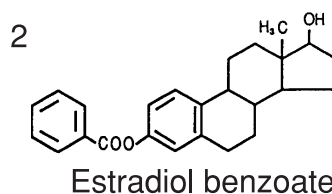
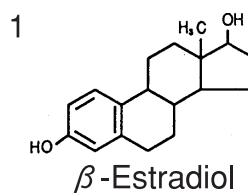
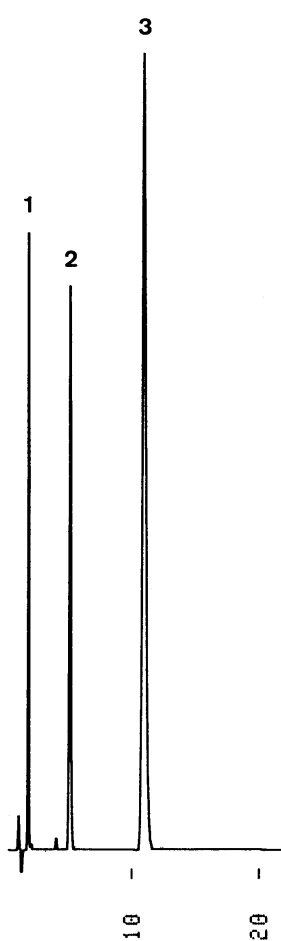


エストロジオール誘導体
Estrogens

S940428E



Column : J'sphere ODS-L80 (4 μ m, 8nm)
75 \times 4.6 mm I.D.
Eluent : acetonitrile/water (65/35)
Flow rate : 1.0 mL/min
Temperature : 37 $^{\circ}$ C
Detection : UV at 230 nm, 0.13 AUFS
Injection : 6 μ L (0.08~0.5 mg/mL)