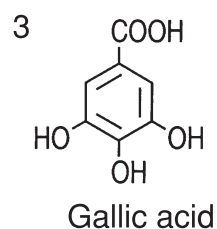
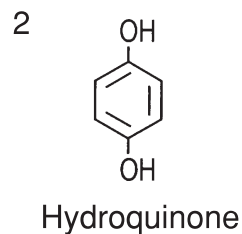
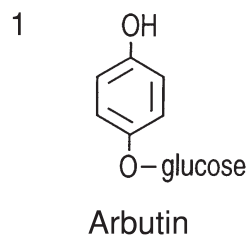
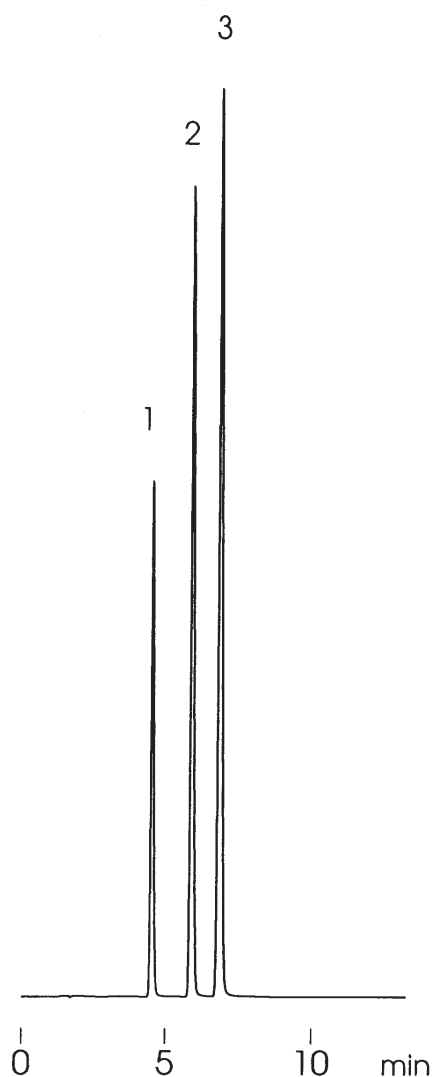


アルブチンおよび関連化合物
Arbutin and related compounds

A970514D



Column : YMC-Pack Pro C18 (5 μ m, 12nm)
150 \times 4.6 mm I.D.
Eluent : methanol/10mM H₃PO₄ (5/95)
Flow rate : 1.0 mL/min
Temperature : 30 $^{\circ}$ C
Detection : UV at 280 nm, 0.32 AUFS
Injection : 5 μ L (0.2~0.5 mg/mL)