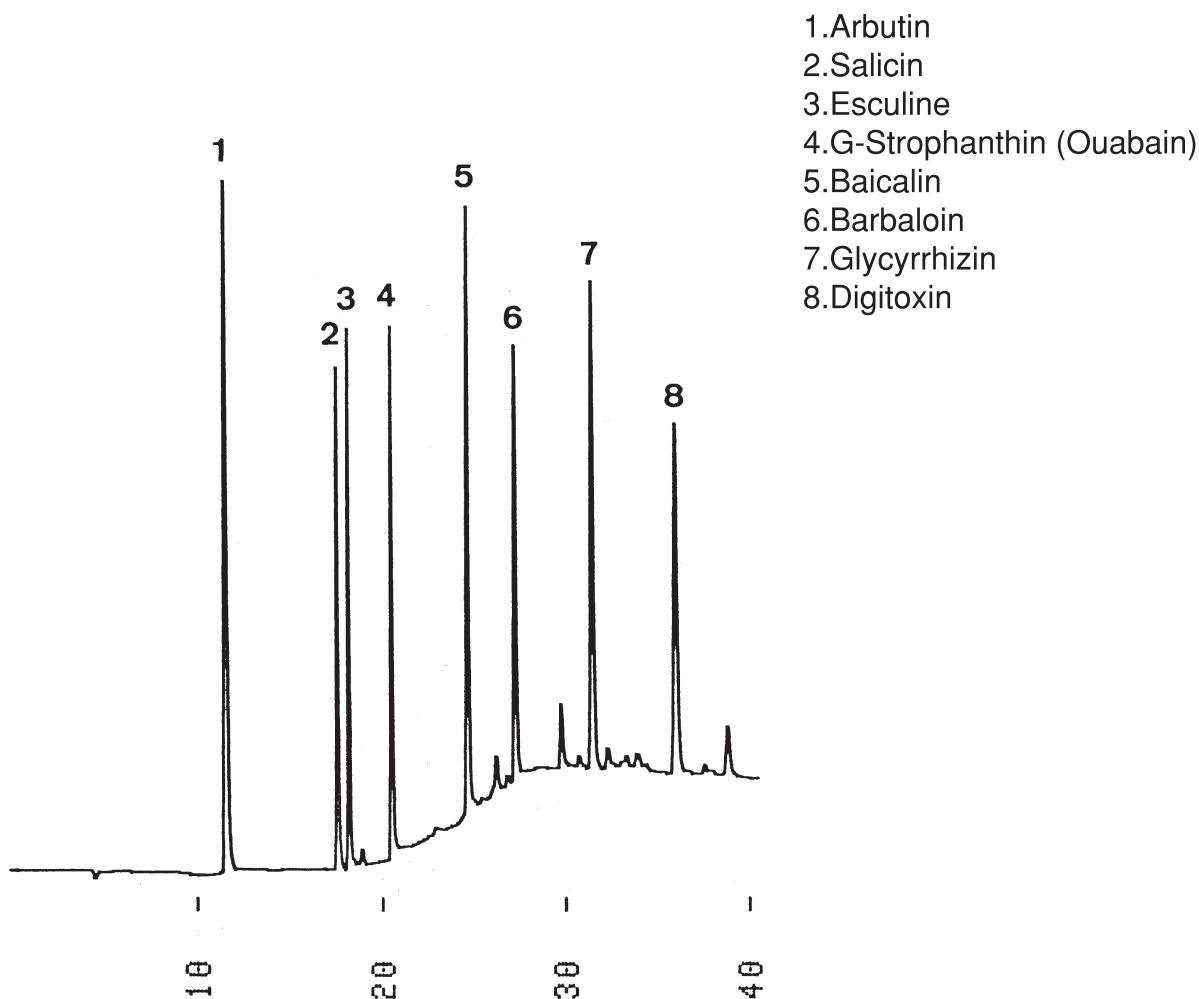


生薬成分 (配糖体)
Crude drugs(Glycosides)

G910607D



Column : YMC-Pack ODS-A (5 μ m, 12nm)
250 \times 4.6 mm I.D.

Eluent : A)methanol/20mM NH₄H₂PO₄ (5/95)
B)methanol/20mM NH₄H₂PO₄ (80/20)
0-100%B (0-20min, linear), 100%B (20-40min)

Flow rate : 0.6 mL/min

Temperature : 30 $^{\circ}$ C

Detection : UV at 250 nm, 0.08 AUFS

Injection : 18 μ L (0.01~0.49 mg/mL)