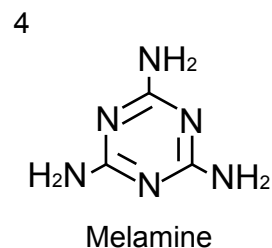
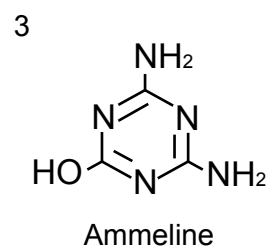
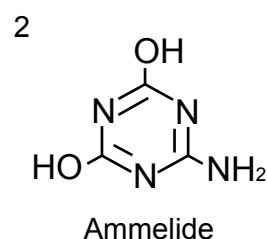
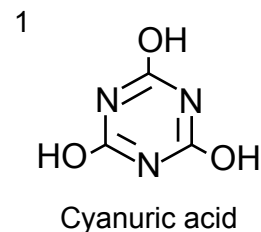
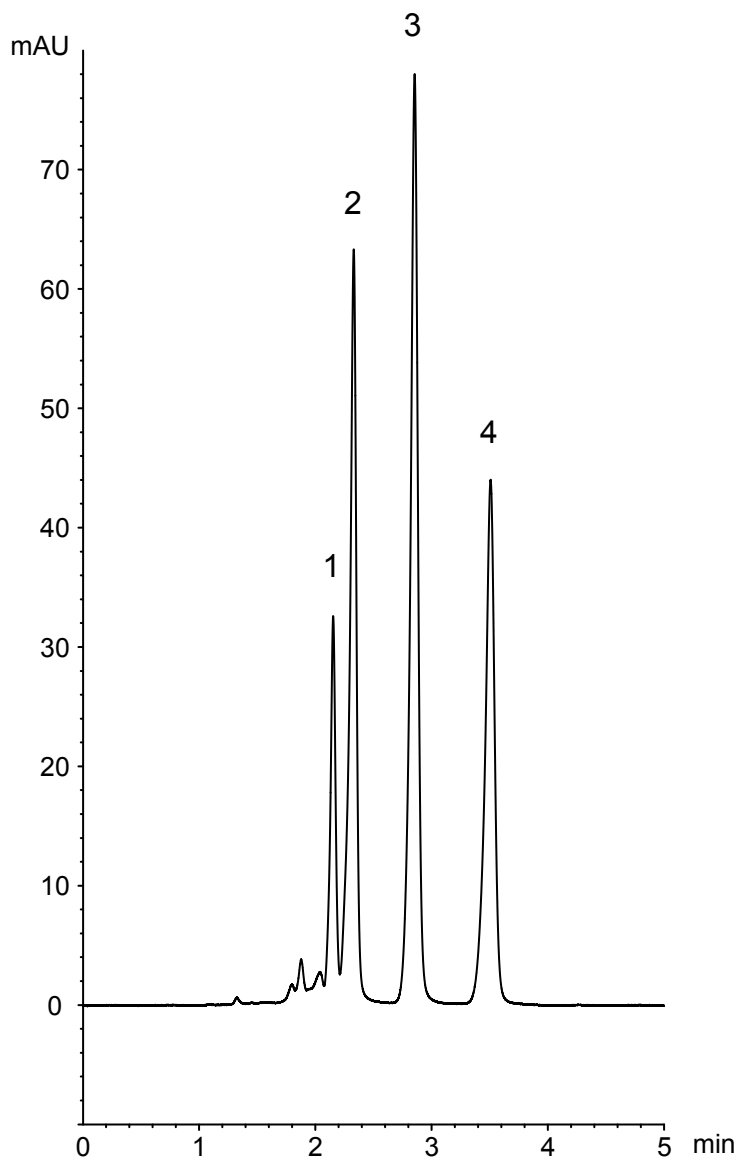


メラミンおよび関連化合物 - LC/MS対応条件

Melamine and related compounds - applicable to LC/MS analysis

R081106I



Column	: YMC-Pack Diol-NP (5 μm, 12 nm) 150 X 3.0 mmI.D.
Eluent	: A)10 mM CH ₃ COONH ₄ B) methanol/acetonitrile (80/20) 95%B (isocratic)
Flow rate	: 0.4 mL/min
Temperature	: 40°C
Detection	: UV at 210 nm
Injection	: 1 μL
Sample	: Cyanuric acid (0.25 mg/mL), Ammelide (0.05 mg/mL), Ammeline (0.025 mg/mL), Melamine (0.01 mg/mL)