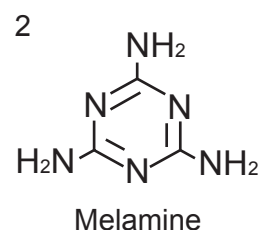
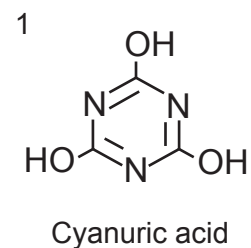
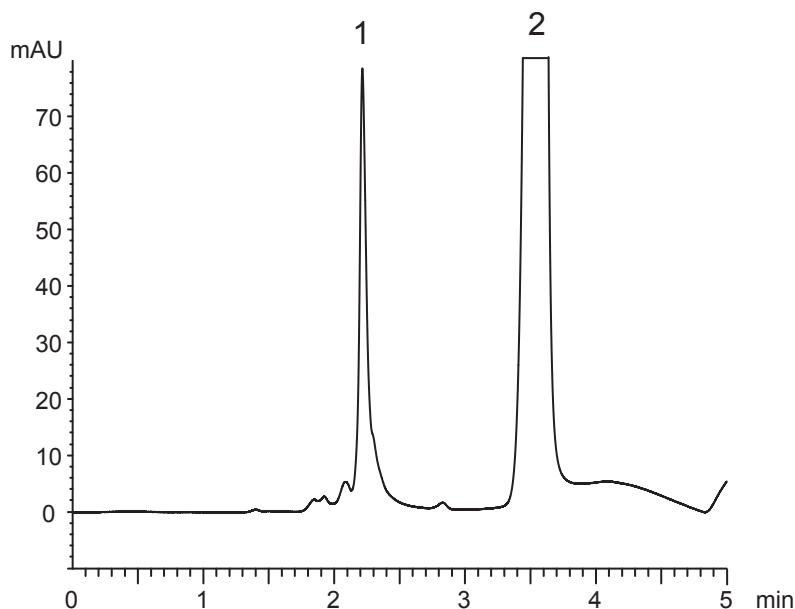


メラミンとシアヌル酸 - LC/MS対応条件

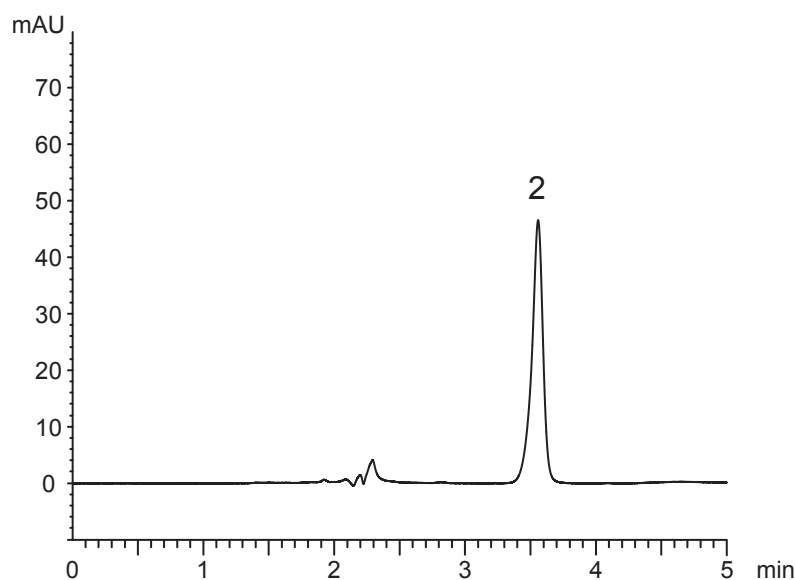
Melamine and Cyanuric acid - applicable to LC/MS analysis

R081023E

(A) UV at 210 nm



(B) UV at 240 nm



Column	: YMC-Pack Diol-NP (5 μm, 12 nm) 150 X 3.0 mm I.D.
Eluent	: A) 10 mM CH ₃ COONH ₄ B) methanol 95-50%B (0-5 min)
Flow rate	: 0.4 mL/min
Temperature	: 40°C
Detection	: (A) UV at 210 nm, (B) UV at 240 nm
Injection	: 1 μL
Sample	: Cyanuric acid (0.5 mg/mL), Melamine (0.2 mg/mL)