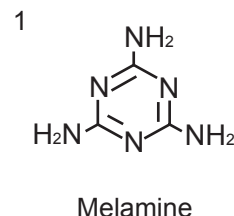
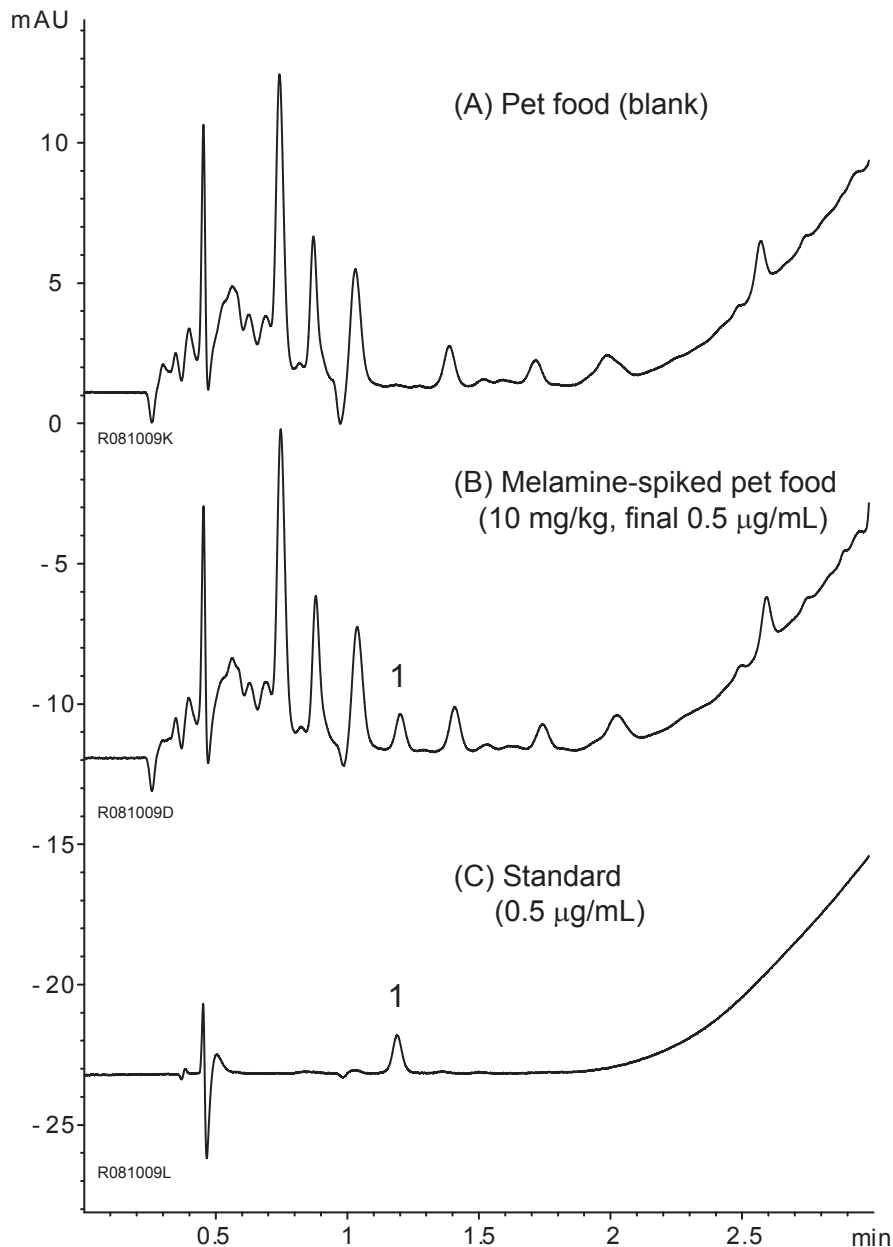


ペットフード中のメラミン - LC/MS対応条件

Melamine in pet food - applicable to LC/MS analysis

R081015A



Sample preparation method

- Pet food (1 g)
- ← 50% aqueous acetonitrile (5 mL)
- Sonication for 30 min
- Centrifugation at 10000 rpm for 10 min
- Filtration
- Dilution 4 times with eluent A
- Filtration
- Injection

Column	: YMC-UltraHT Hydrosphere C18 (2 µm, 12 nm) 50 X 2.0 mm I.D.
Eluent	: A) water/heptafluorobutyric acid (100/0.1) B) methanol/heptafluorobutyric acid (100/0.1) 5%B (0-0.17 min), 5-90%B (0.17-3 min)
Flow rate	: 0.4 mL/min
Temperature	: 40°C
Detection	: UV at 240 nm
Injection	: 1 µL