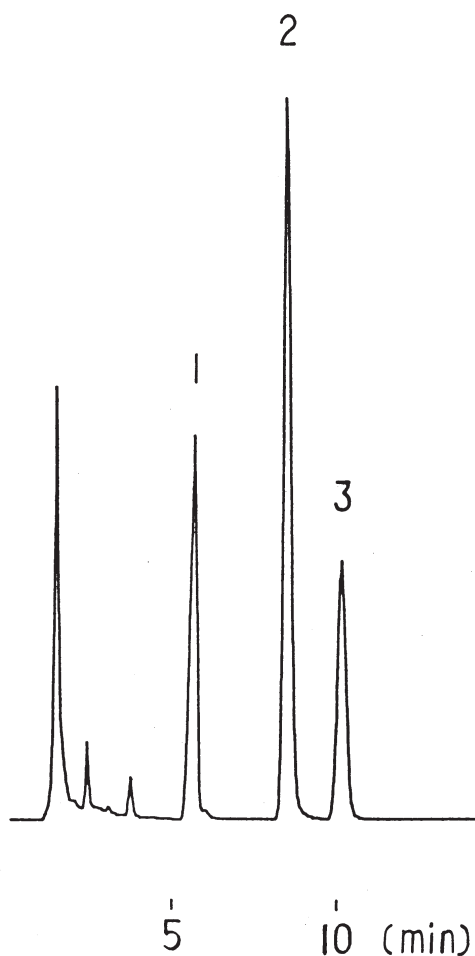


市販炭酸飲料中のアスパルテーム
Aspartame in a soft drink

T910123

1. Benzoic acid
2. Caffeine
3. Aspartame



Column : YMC-Pack Ph (5 μ m, 12nm)
150 \times 4.6 mm I.D.
Eluent : 50mM KH₂PO₄/acetonitrile/methanol (84/3/13)
Flow rate : 1.5 mL/min
Temperature : 30 $^{\circ}$ C
Detection : UV at 214 nm, 0.64 AUFS
Injection : 10 μ L