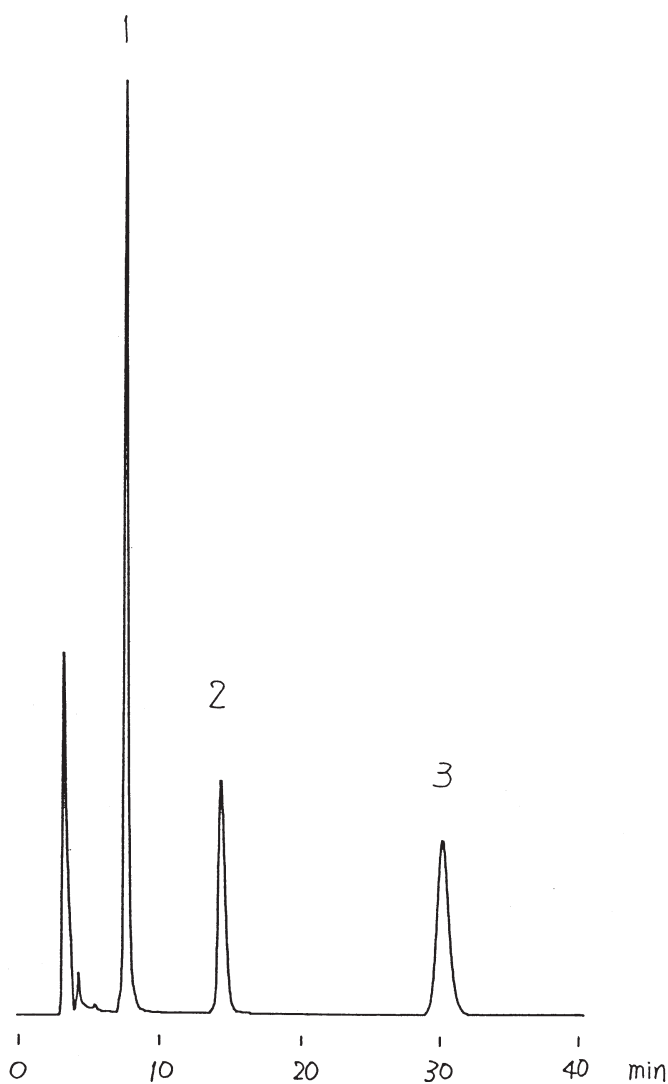


市販炭酸飲料中のアスパルテーム
Aspartame in a soft drink

H900710A



1.Caffeine
2.Aspartame
3.Benzoic acid

Column : YMC-Pack ODS-A (5 μ m, 12nm)
150 \times 4.6 mm I.D.
Eluent : acetonitrile/water/TFA (15/85/0.05)
Flow rate : 0.5 mL/min
Temperature : 30 $^{\circ}$ C
Detection : UV at 220 nm, 0.64 AUFS
Injection : 5 μ L