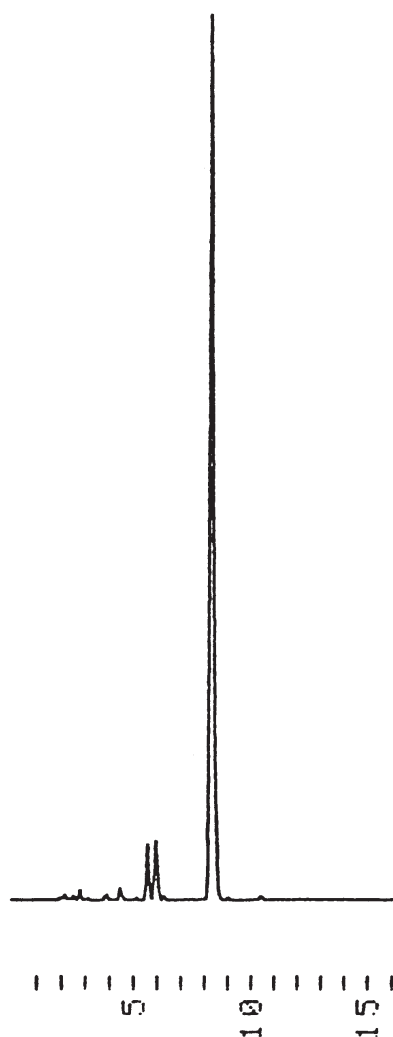


水溶性アナトー  
Annatto extract

M910430E



1. Annatto pigment

Column : YMC-Pack ODS-AM (5  $\mu$ m, 12nm)  
150  $\times$  4.6 mm I.D.  
Eluent : acetonitrile/water/acetic acid (65/34/1)  
Flow rate : 1.0 mL/min  
Temperature : 30  $^{\circ}$ C  
Detection : VIS at 454 nm, 0.16 AUFS  
Injection : 5  $\mu$ L (2 mg/mL)  
Sample : Annatto pigment