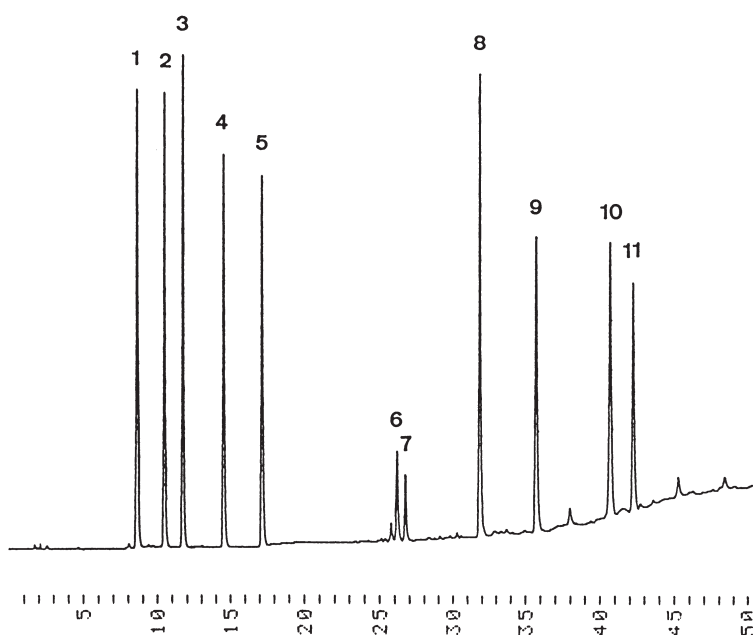


タール色素  
Color additives

M910427A



1. Tartrazine  
(FD&C Yellow No.5, C.I.19140, Y-4)
2. Amaranth  
(C.I.16185, R-2)
3. Indigo Carmine  
(FD&C Blue No.2, C.I.73015, B-2)
4. New Coccine  
(C.I.16255, R-102)
5. Sunset Yellow FCF  
(FD&C Yellow No.6, C.I.15985, Y-5)
6. Fast Green FCF  
(FD&C Green No.3, C.I.42053, G-3)
7. Brilliant Blue FCF  
(FD&C Blue No.1, C.I.42090, B-1)
8. Erythrosine  
(FD&C Red No.3, C.I.45430, R-3)
9. Acid Red  
(C.I.45100, R-106)
10. Phloxine  
(C.I.45410, R-104)
11. Rose Bengale  
(C.I.45440, R-105)

Column : YMC-Pack ODS-A (5  $\mu$ m, 12nm)  
150  $\times$  4.6 mm I.D.

Eluent : A) 10mM NH<sub>4</sub>H<sub>2</sub>PO<sub>4</sub> - (NH<sub>4</sub>)<sub>2</sub>HPO<sub>4</sub> (pH 6.0)/methanol (90/10)  
B) 10mM NH<sub>4</sub>H<sub>2</sub>PO<sub>4</sub> - (NH<sub>4</sub>)<sub>2</sub>HPO<sub>4</sub> (pH 6.0)/methanol (20/80)  
0-100%B (0-40min, linear), 100%B (40-60min)

Flow rate : 1.0 mL/min

Temperature : 30  $^{\circ}$ C

Detection : UV at 254 nm, 0.32 AUFS

Injection : 100  $\mu$ L (5  $\mu$ g/mL)