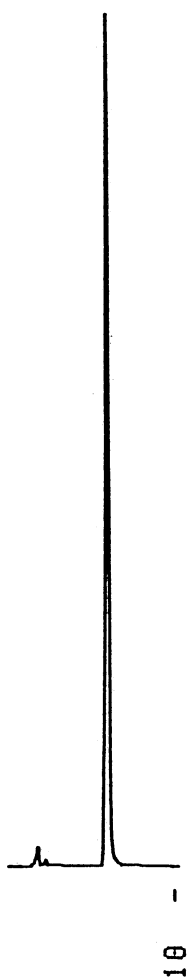


アシュラム

Methyl sulfanilylcarbamate

G910223C

1.Asulam



Column : YMC-Pack MB-ODS
150 × 2.1 mm I.D.
Eluent : THF/water/TFA (10/90/0.05)
Flow rate : 0.3 mL/min
Temperature : 30 °C
Detection : UV at 260 nm, 0.01 AUFS
Injection : 10 μL (1.0 mg/L)