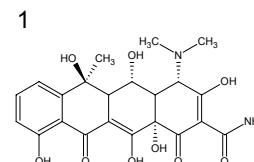
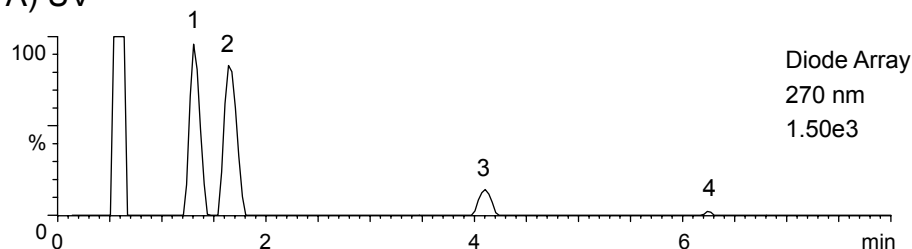


テトラサイクリン系抗生物質の LC/MS 分析

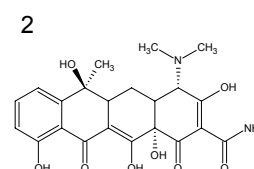
LC/MS analysis of tetracycline antibiotics

F100128B

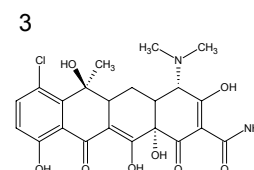
A) UV



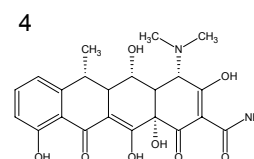
Oxytetracycline
(MW 460.4)



Tetracycline
(MW 444.4)

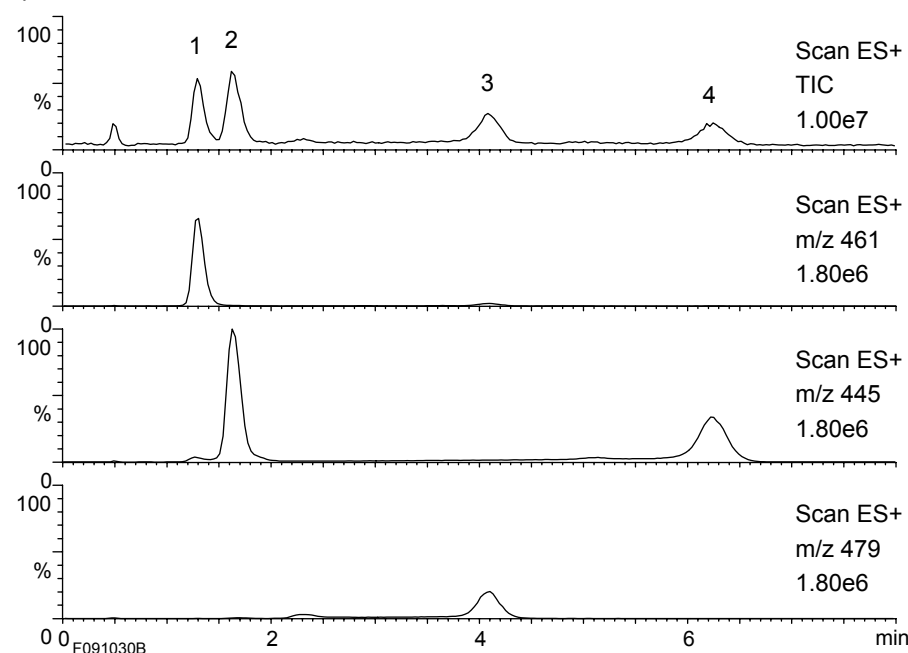


Chlortetracycline
(MW 478.8)

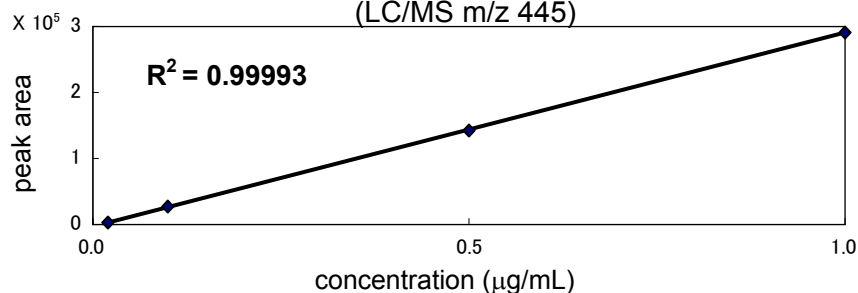


Doxycycline
(MW 444.4)

B) MS



Calibration curve of tetracycline
(LC/MS m/z 445)



Column : YMC-Triart C18 (5 µm, 12 nm)
50 X 2.0 mmI.D.

Eluent : acetonitrile/water/formic acid (15/85/0.1)

Flow rate : 0.4 mL/min

Temperature : 40°C

Detection : A) UV at 270 nm
B) ESI positive-mode

Injection : 10 µL (1 µg/mL)