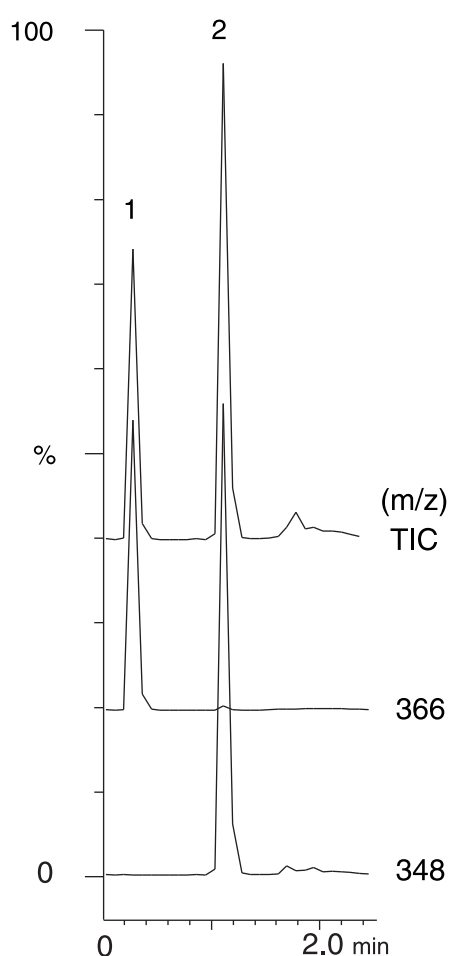
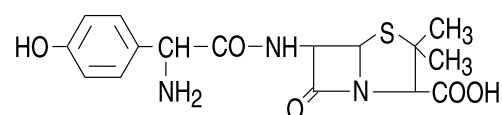


抗生物質の高速分離 - LC/MS
Rapid separation of antibiotics - LC/MS

A020620A

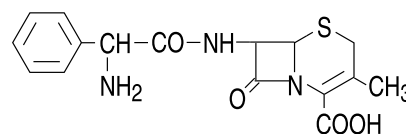


1.



Amoxicillin (MW:365.1)

2.



Cephalexin (MW:347.1)

Column : LC/MS Cartridge Column VA
Pro C18 (3 μm, 12nm)
20 × 2.0 mm I.D.

Eluent : A) water/formic acid (100/0.05)
B) methanol/formic acid (100/0.05)
10-90%B(0-0.5min), 90%B(0.5-1.0min)

Flow rate : 0.6 mL/min

Temperature : 37 °C

Detection : ESI-positive mode

Injection : 2 μL