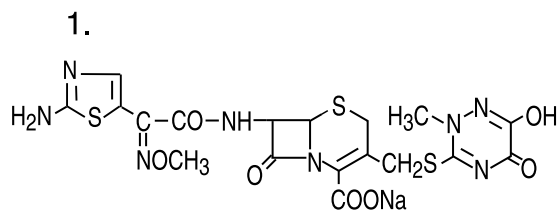
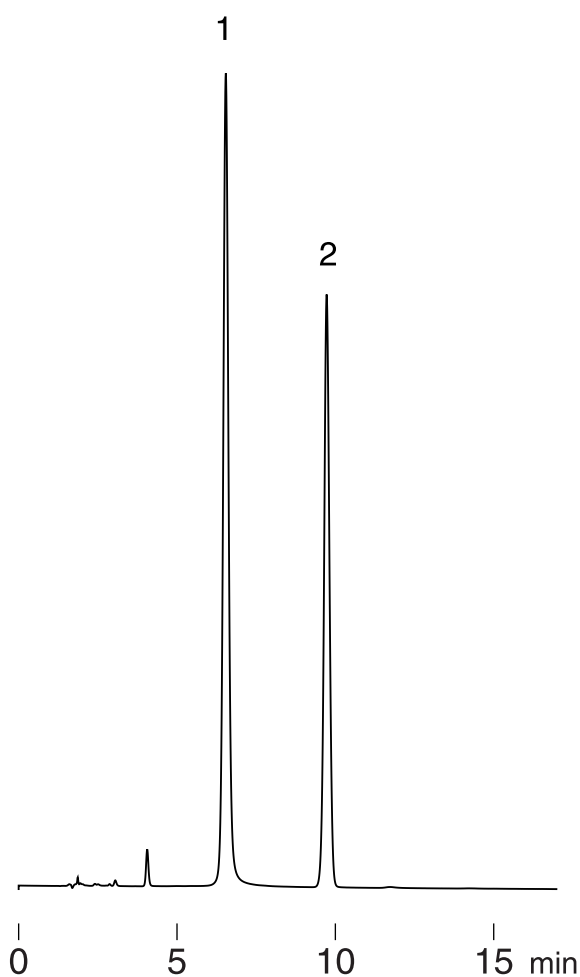
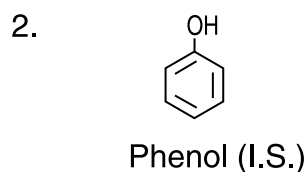


セフトリアキソン
Ceftriaxone

S000726B



Ceftriaxone sodium



Column : Hydrosphere C18 (5 μ m, 12nm)
150 \times 4.6 mm I.D.
Eluent : methanol / 10mM H₃PO₄ (25/75)
Flow rate : 1.0 mL/min
Temperature : 37 $^{\circ}$ C
Detection : UV at 260 nm, 0.32 AUFS
Injection : 10 μ L (0.1, 0.4 mg/mL)