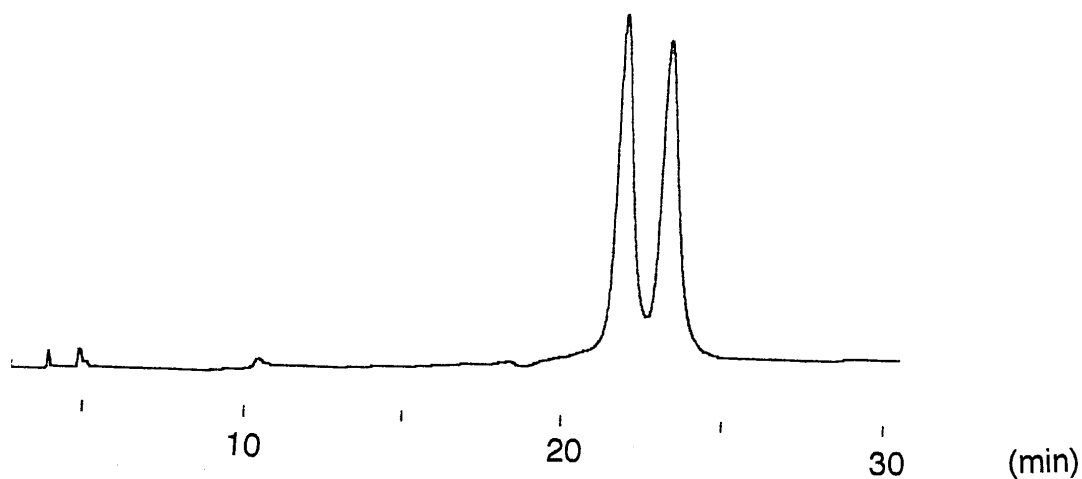
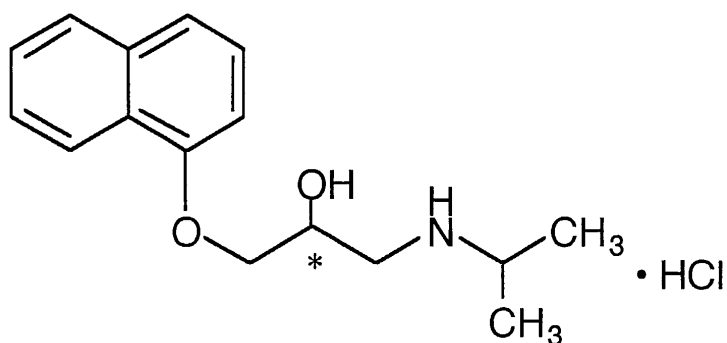


塩酸プロプラノロール
Propranolol hydrochloride

N020605R



Column	: YMC CHIRAL γ -CD BR 250 × 4.6 mm I.D.
Eluent	: acetonitrile/methanol/acetic acid/triethylamine (99/1/0.3/0.25)
Flow rate	: 1.0 mL/min
Temperature	: 25 °C
Detection	: UV at 254 nm
Injection	: 5 μ L (1 mg/mL)