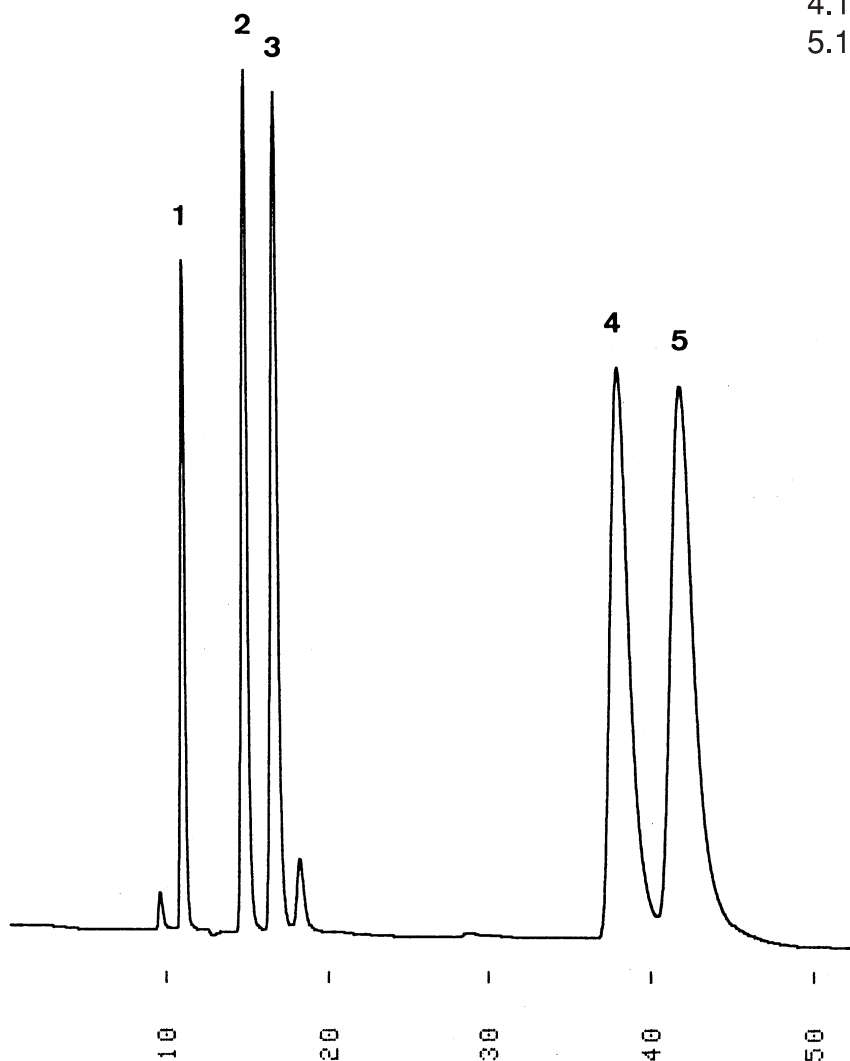


尿素及び関連化合物
Urea and related compounds

M920108A

1. Urea
2. Propionamide
3. Ethylurea
4. 1,3-Diethylurea
5. 1,1-Diethylurea



Column : YMC-Pack PolymerC18
250 × 6.0 mm I.D.
Eluent : 0.4% HClO₄ (pH 1.3)
Flow rate : 0.5 mL/min
Temperature : 25 °C
Detection : UV at 210 nm, 0.32 AUFS
Injection : 15 μL (0.4~7.5 mg/mL)