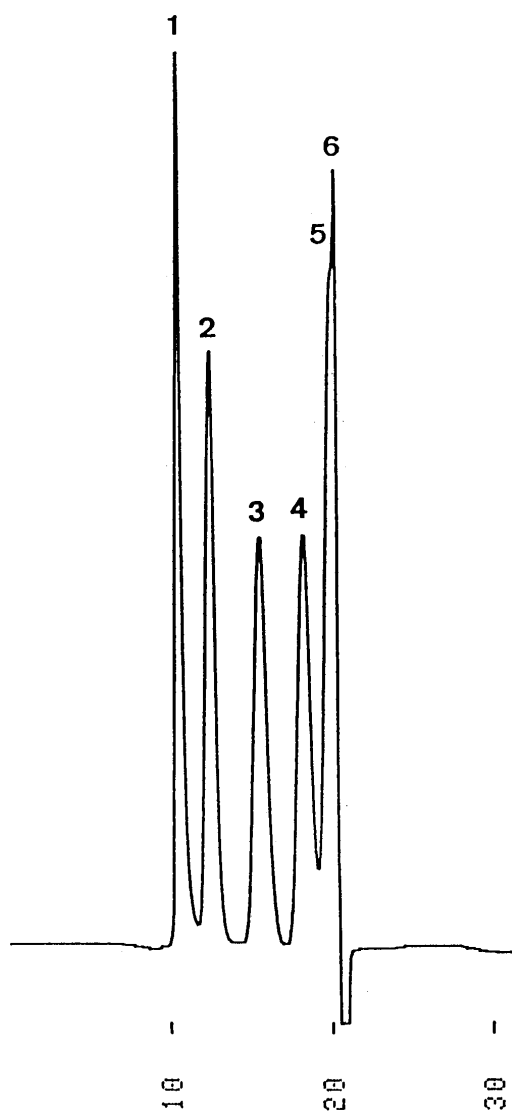


ポリエチレングリコール
Polyethyleneglycols

G920123A

1.PEG #20,000	(MW 20,000)
2.PEG #6,000	(MW 8,400)
3.PEG #4,000	(MW 3,350)
4.PEG #1,000	(MW 1,000)
5.PEG #300	(MW 300)
6.Ethyleneglycol	(MW 62)



Column : YMC-Pack Diol-120
500 × 8.0 mm I.D.
Eluent : acetonitrile/water(10/90)
Flow rate : 1.0 mL/min
Temperature : ambient (22 °C)
Detection : RI, 64 × 10⁻⁶ RIU/FS
Injection : 100 μL (1.67 mg/mL)