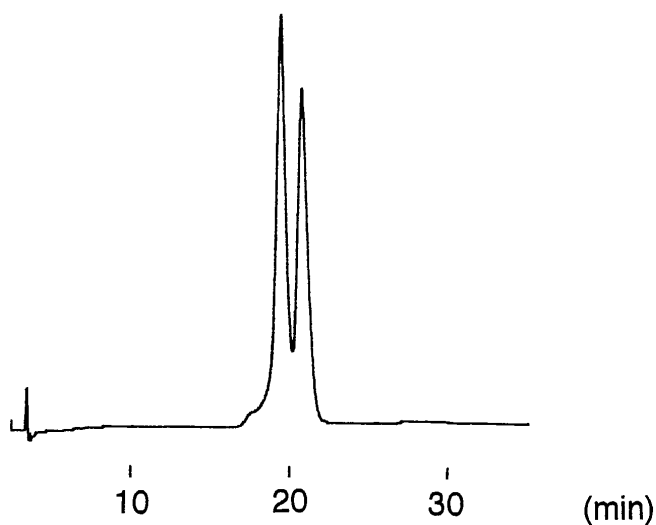
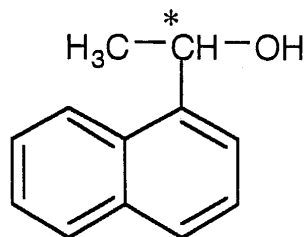


ナフチルエチルアルコール
1-(1-Naphthyl)-ethylalcohol

N020605P



Column	: YMC CHIRAL γ -CD BR 250 \times 4.6 mm I.D.
Eluent	: 0.2M AcOH - 0.2M TEA (pH 5.6)/methanol (90/10) (TEA=triethylamine)
Flow rate	: 1.0 mL/min
Temperature	: 30 $^{\circ}$ C
Detection	: UV at 254 nm
Injection	: 5 μ L (1 mg/mL)