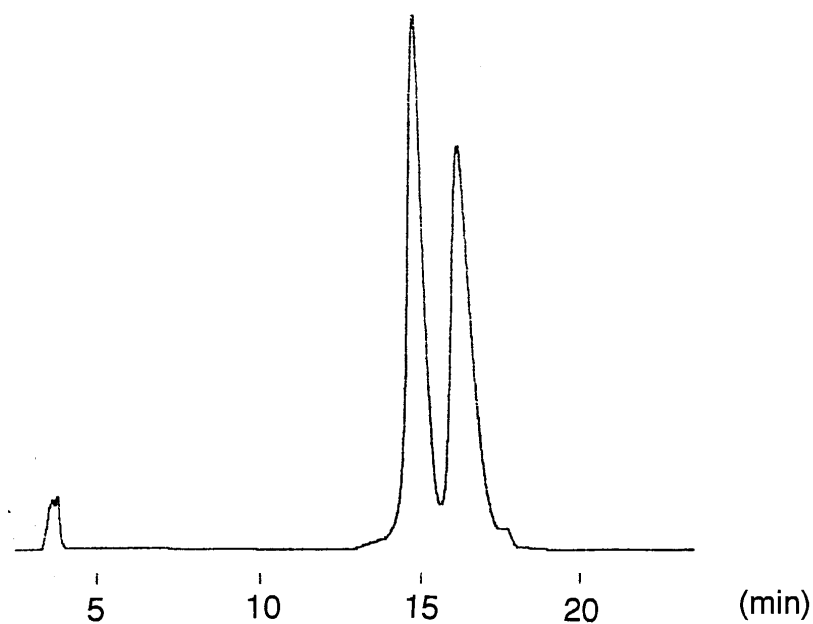
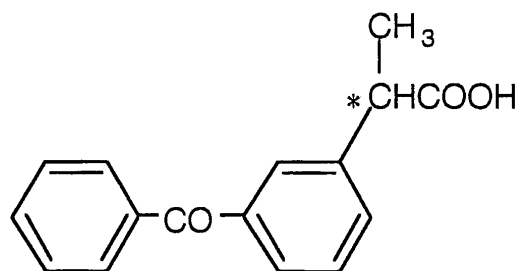


ケトプロフェン  
Ketoprofen

N020605M



Column	: YMC CHIRAL $\beta$ -CD BR 250 $\times$ 4.6 mm I.D.
Eluent	: 0.2M AcOH - 0.2M TEA (pH 5.6)/methanol (30/70) (TEA=triethylamine)
Flow rate	: 1.0 mL/min
Temperature	: 25 $^{\circ}$ C
Detection	: UV at 254 nm
Injection	: 10 $\mu$ L (1 mg/mL)