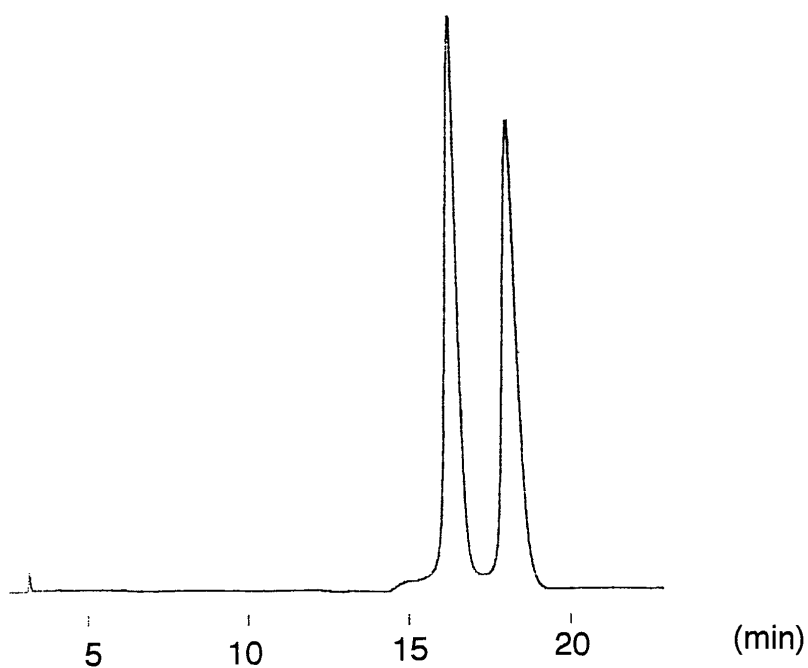
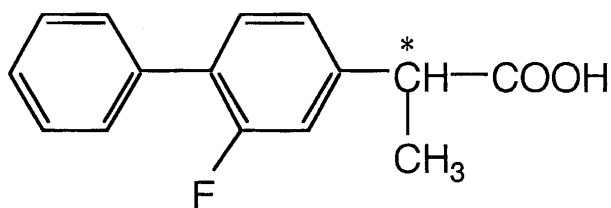


フルルビプロフェン  
Flurbiprofen

N020605I



Column	: YMC CHIRAL $\beta$ -CD BR 250 $\times$ 4.6 mm I.D.
Eluent	: 0.53M AcOH - 0.53M TEA (pH 4.0)/acetonitrile (10/90) (TEA=triethylamine)
Flow rate	: 1.0 mL/min
Temperature	: 25 $^{\circ}$ C
Detection	: UV at 254 nm
Injection	: 2 $\mu$ L (1 mg/mL)