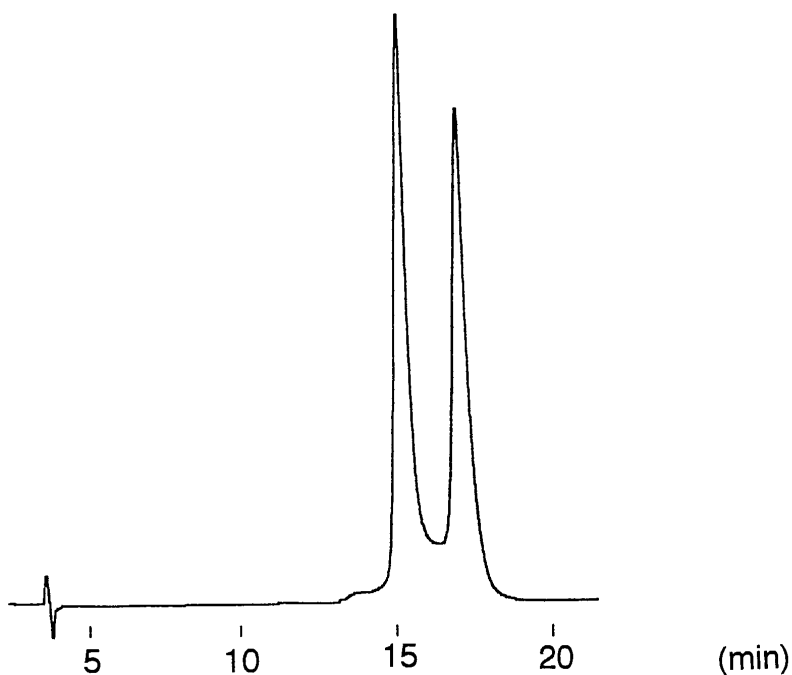
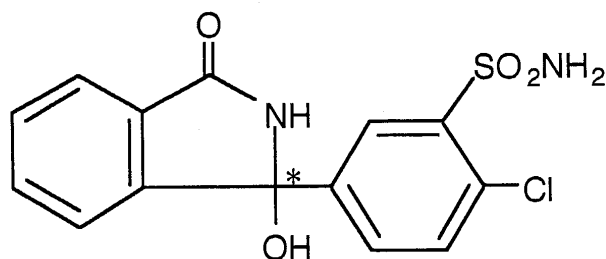


クロルタリドン  
Chlorthalidone

N020605G



Column : YMC CHIRAL  $\beta$ -CD BR  
250  $\times$  4.6 mm I.D.  
Eluent : water/acetic acid (100/1)  
Flow rate : 1.0 mL/min  
Temperature : 25  $^{\circ}$ C  
Detection : UV at 254 nm  
Injection : 2  $\mu$ L (1 mg/mL)