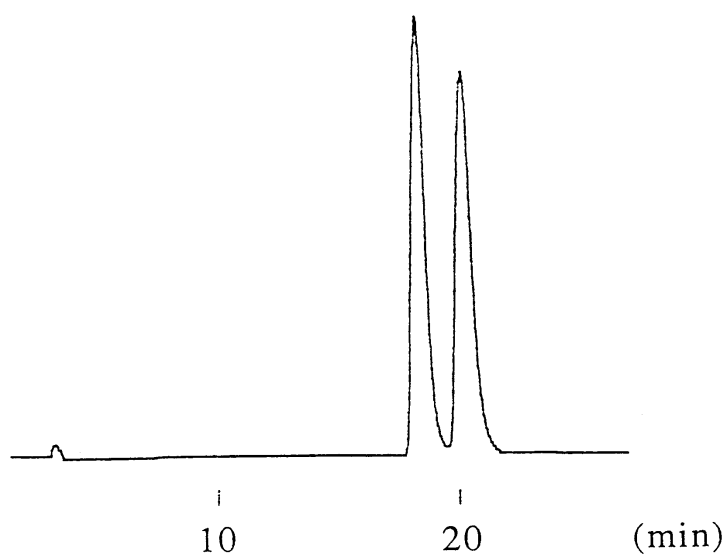
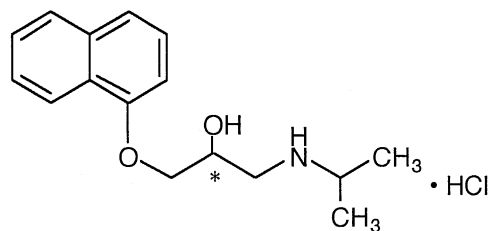


塩酸プロプラノロール
Propranolol hydrochloride

N020605E



| | |
|-------------|--|
| Column | : YMC CHIRAL NEA (R) 250 × 4.6 mm I.D. |
| Eluent | : acetonitrile/0.5M NaClO ₄ (40/60) |
| Flow rate | : 1.0 mL/min |
| Temperature | : ambient |
| Detection | : UV at 254 nm |
| Injection | : 5 μL (1.5 mg/mL) |