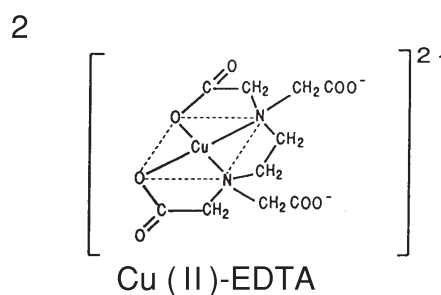
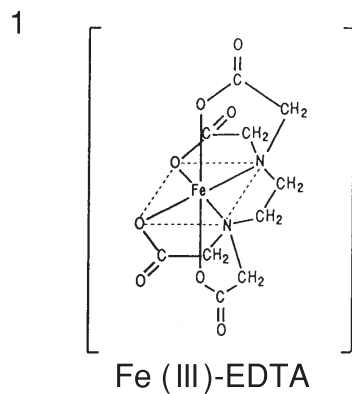
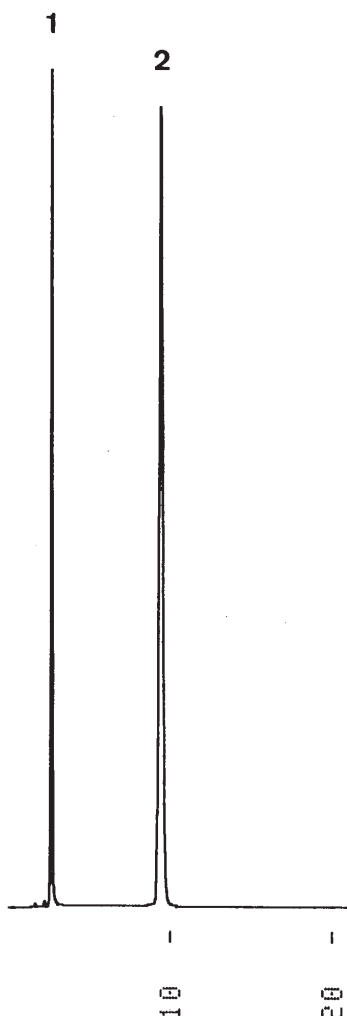


EDTAキレート
EDTA-chelates

T940208A



EDTA: Ethylenediamine-
tetraacetic acid

Column	: J'sphere ODS-H80 (4 μ m, 8nm) 150 \times 4.6 mm I.D.
Eluent	: 50mM CH ₃ COONa-CH ₃ COOH (pH 4.6) containing 20mM tetrabutylammonium bromide
Flow rate	: 1.0 mL/min
Temperature	: 37 $^{\circ}$ C
Detection	: UV at 254 nm, 0.04 AUFS
Injection	: 10 μ L (0.017~0.13 mg/mL)