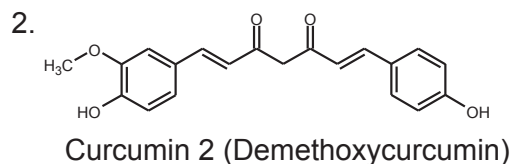
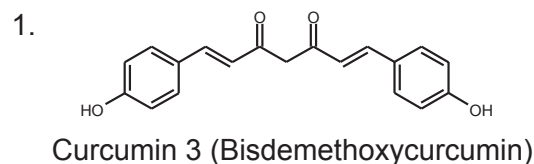
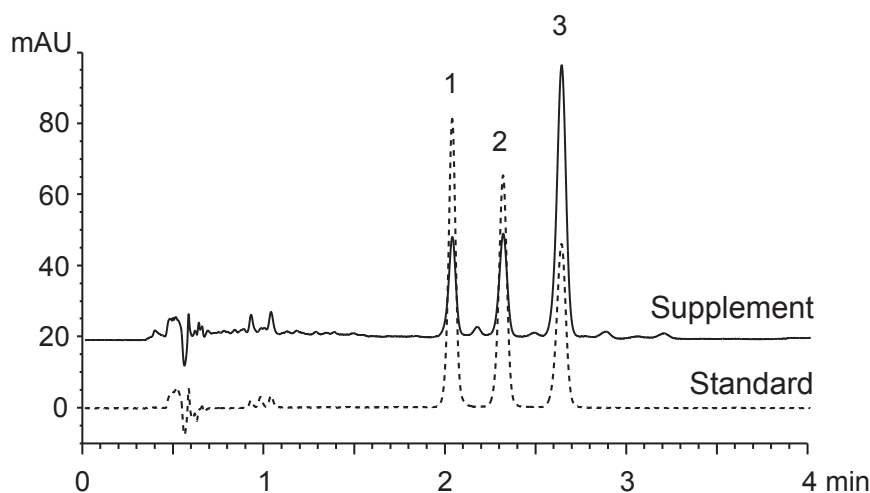


ウコンサプリメント中のクルクミン

Curcuminoids in a commercial turmeric supplement

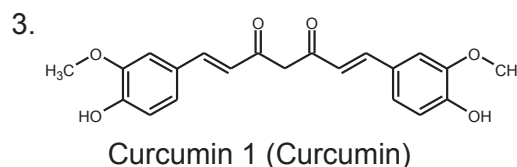
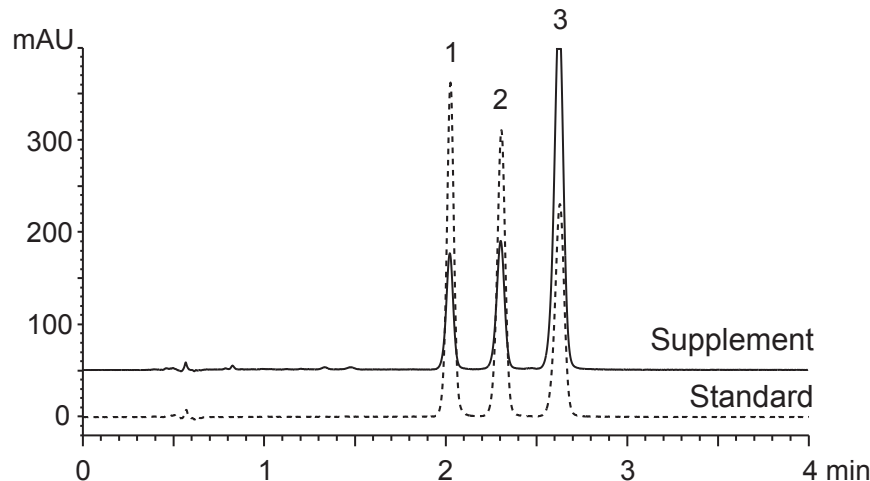
N070729S

A) UV at 250 nm



3

B) UV at 420 nm



Column	: YMC-UltraHT Pro C18 (2 μm, 12 nm)
Eluent	: 100 X 2.0 mm I.D. acetonitrile / water / formic acid (50/50/0.1)
Flow rate	: 0.4 mL/min
Temperature	: 40°C
Detection	: A) UV at 250 nm, B) UV at 420 nm
Injection	: standard 1 μL (0.1 mg/mL) : supplement 1 μL (6.9 mg/mL)
Sample	: methanol extract of a commercially available turmeric supplement