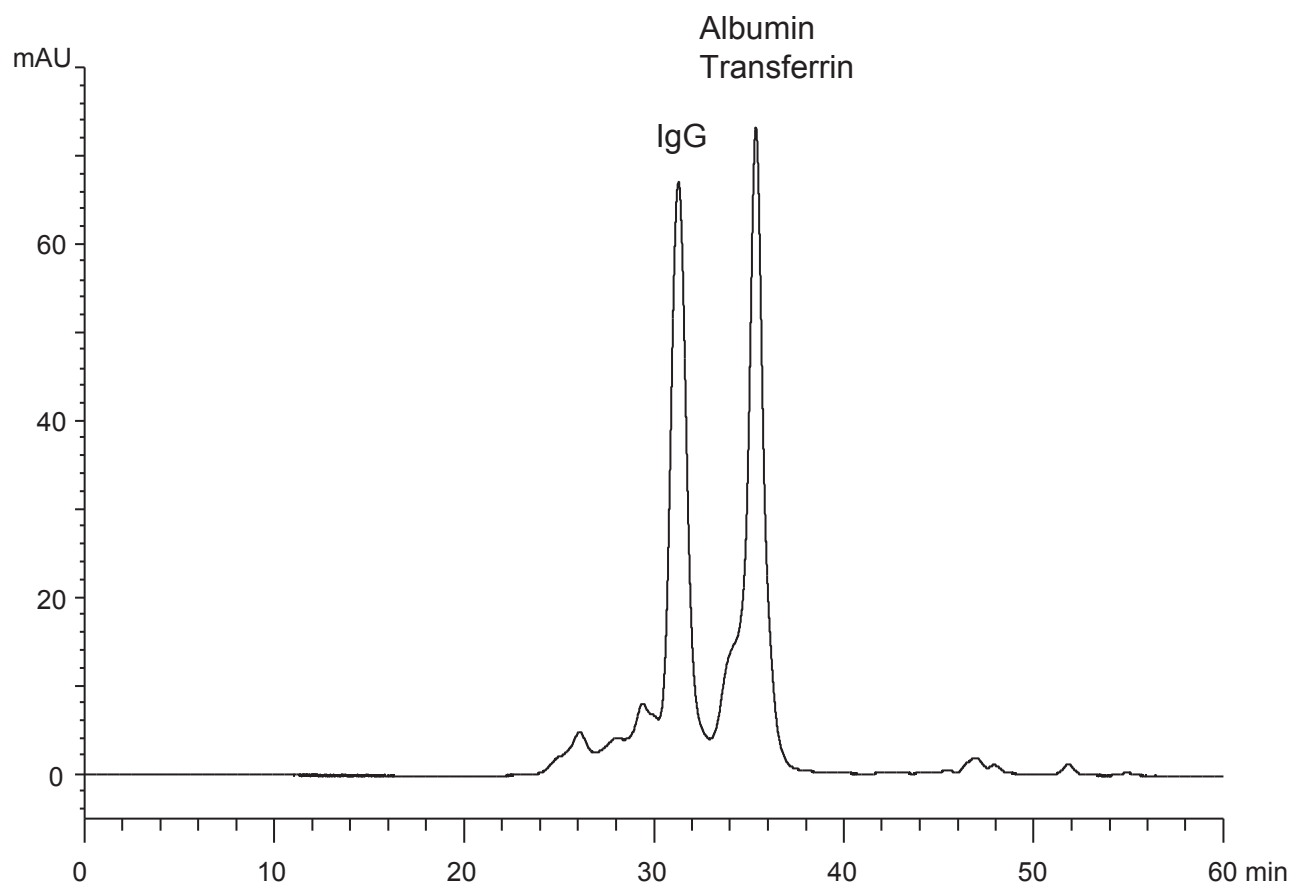


マウス腹水中のタンパク質  
Proteins in mouse ascites fluid

P080528A



Column : YMC-Pack Diol-300 + Diol-200  
300 X 4.6 mm I.D. X 2  
Eluent : 0.1 M  $\text{KH}_2\text{PO}_4$ - $\text{K}_2\text{HPO}_4$  (pH 7.0)  
Flow rate : 0.17 mL/min  
Temperature : ambient (25°C)  
Detection : UV at 220 nm  
Injection : 10  $\mu\text{L}$  (60 times dilution with water)