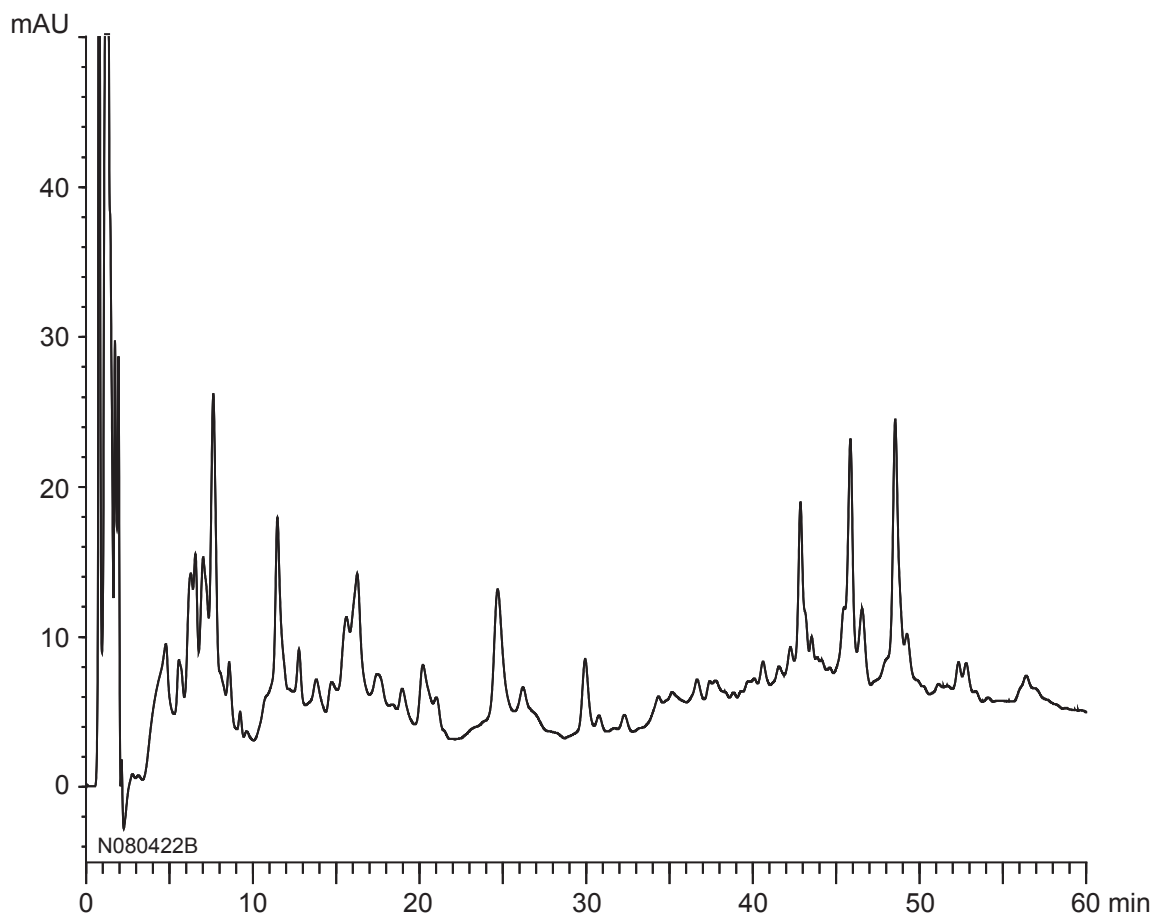


ペプチドマッピング
Peptide mapping

N080422B



Column	: YMC-BioPro QA (5 μ m, 100 nm) 50 X 4.6 mm I.D.
Eluent	: A) 20 mM Tris-HCl (pH 8.6) B) 20 mM Tris-HCl (pH 8.6) containing 0.5 M NaCl 0-15%B (0-30 min), 15-60%B (30-60 min)
Flow rate	: 0.5 mL/min
Temperature	: 25°C
Detection	: UV at 220 nm
Injection	: 20 μ L
Sample	: Tryptic digest of BSA