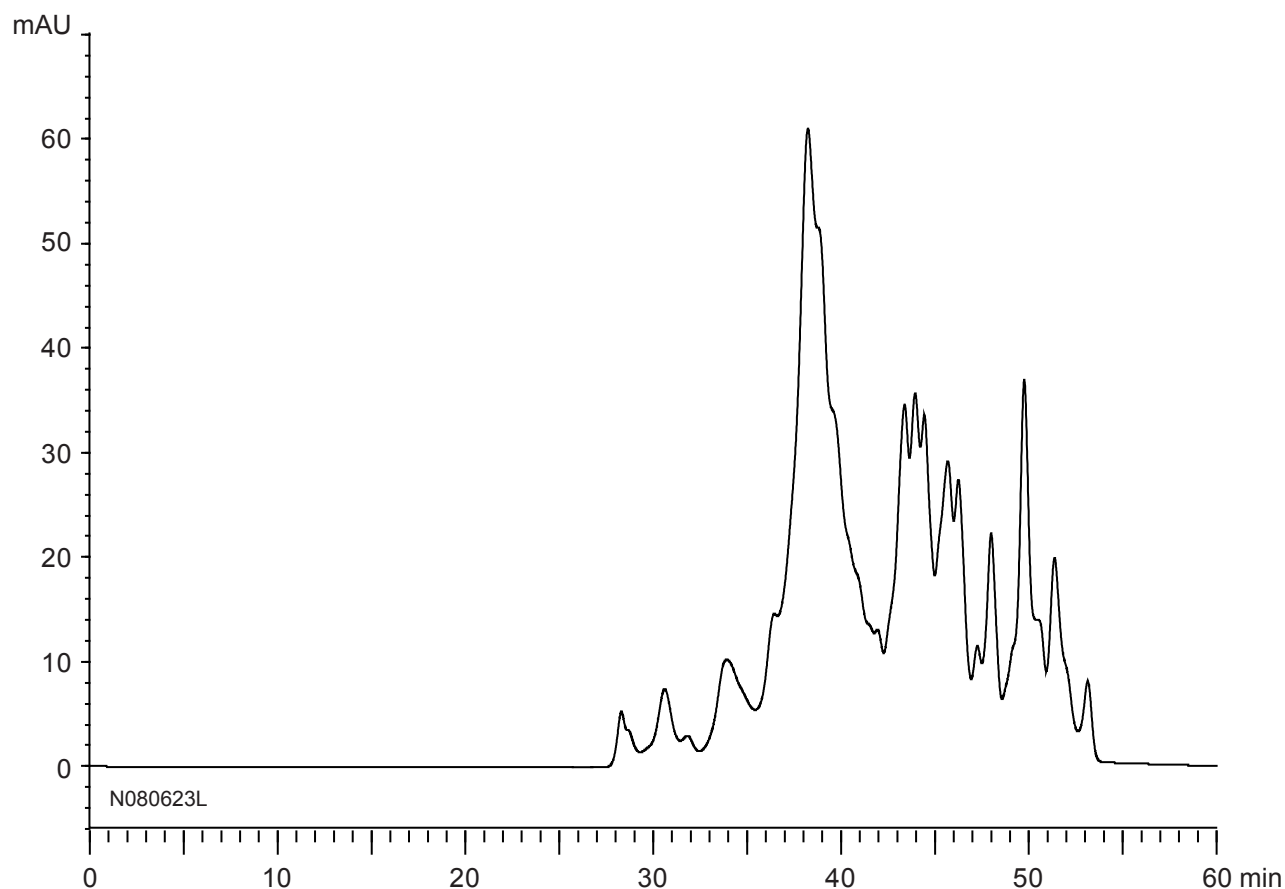


ペプチドマッピング
Peptide mapping

N080623L



Column : YMC-Pack Diol-120 + Diol-60
500 X 8.0 mm I.D. X 2

Eluent : 0.1 M KH_2PO_4 - K_2HPO_4 (pH 7.0) containing 0.2 M NaCl / acetonitrile (70/30)

Flow rate : 0.7 mL/min

Temperature : ambient (25°C)

Detection : UV at 220 nm

Injection : 5 μL

Sample : Tryptic digest of BSA