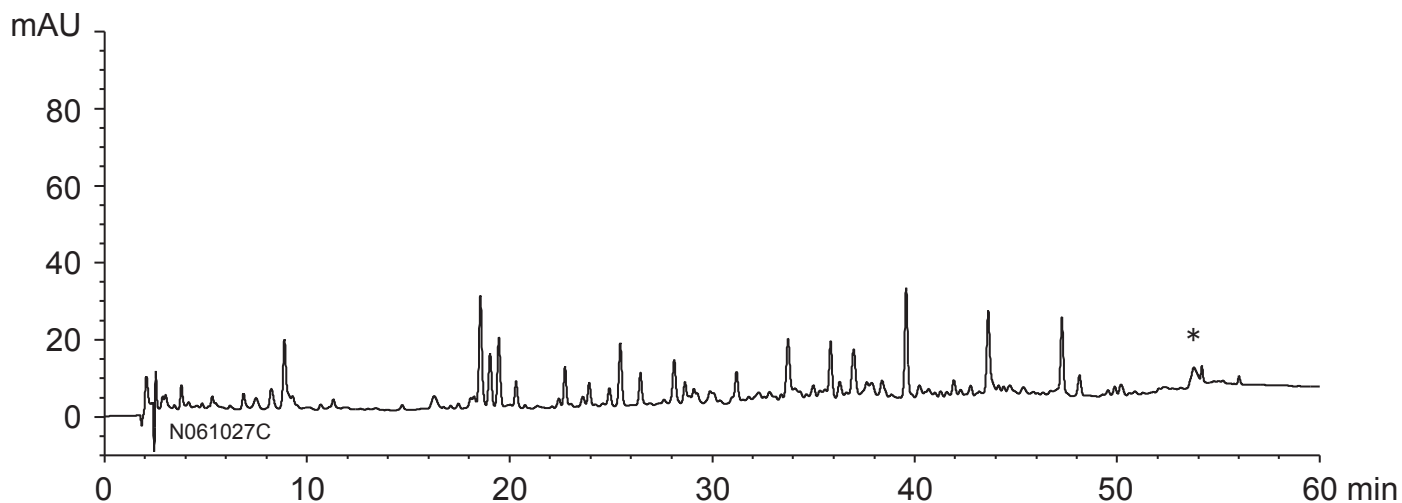


# YMC HPLC DATA SHEET

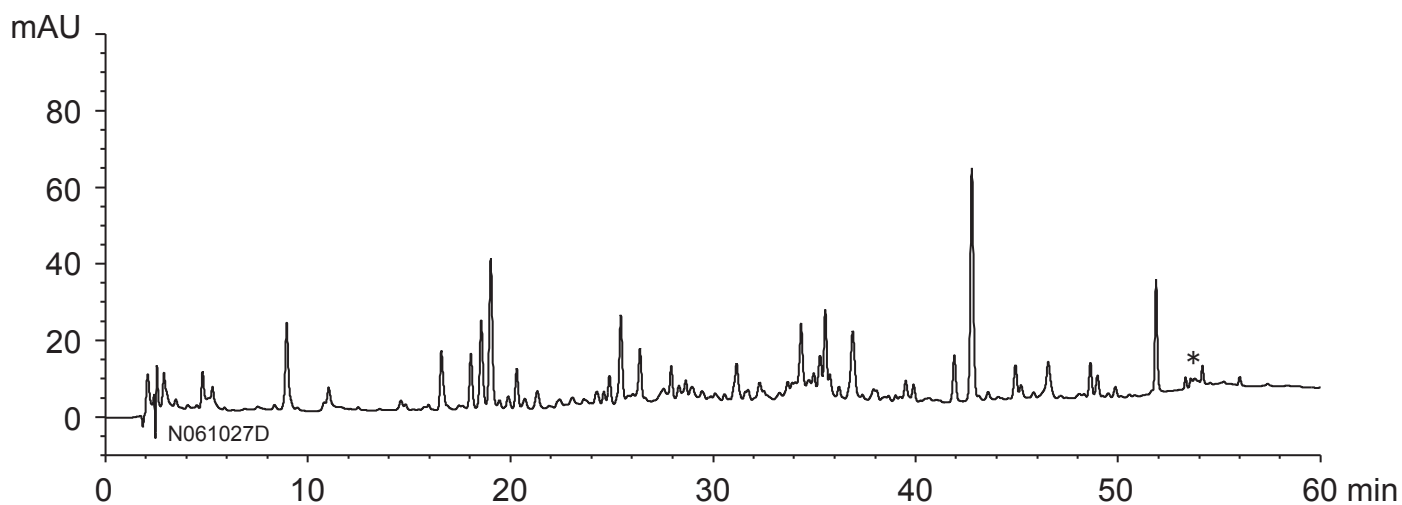
ペプチドマッピング  
Peptide mapping

N070629D

Tryptic digest of BSA



Lysyl endopeptidase digest of BSA



\* undigested BSA

Column	: YMCbasic (5 $\mu$ m) 150 X 2.0 mmI.D.
Eluent	: A) water / TFA (100/0.1) B) acetonitrile / TFA (100/0.1) 5-35%B (0-50 min), 35-45%B (50-55 min), 45%B (55-60 min)
Flow rate	: 0.2 mL/min
Temperature	: 37°C
Detection	: UV at 220 nm
Injection	: 1 $\mu$ L