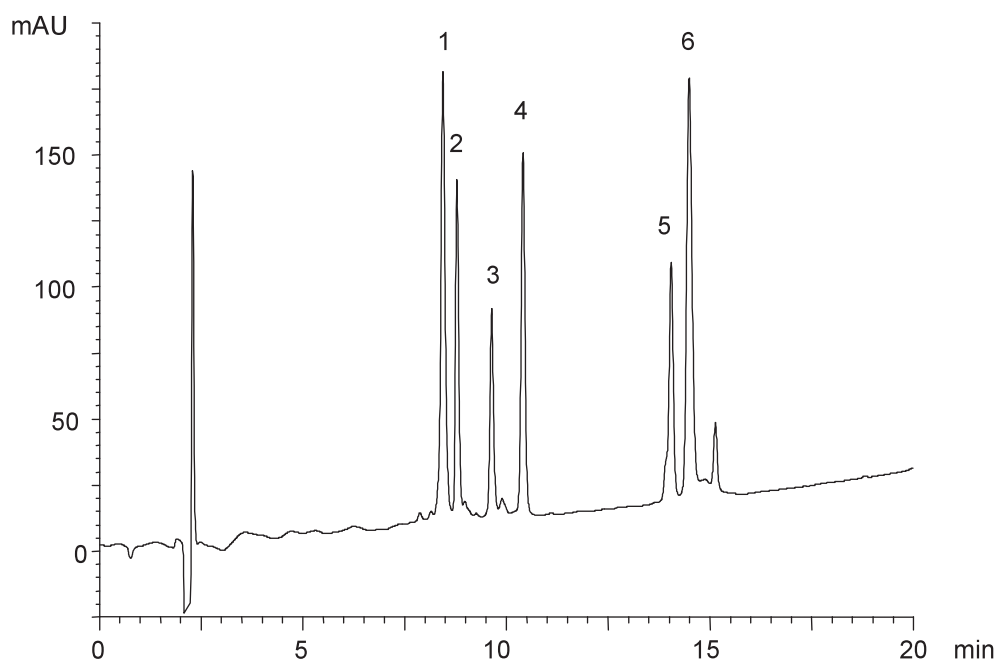


ペプチドおよびタンパク質(MW 4,330 - 17,000)

Peptides and proteins(MW 4,330 - 17,000)

N040820A

- | | |
|---------------------------------------|-------------|
| 1. Cytochrome c (Horse heart) | (MW 12,400) |
| 2. Insulin (Bovine pancreas) | (MW 5,733) |
| 3. Amyloid β -protein (1-40) | (MW 4,330) |
| 4. Lysozyme (Chicken egg white) | (MW 14,300) |
| 5. α -Lactalbumin (Human milk) | (MW 14,100) |
| 6. Myoglobin (Horse skeletal muscle) | (MW 17,000) |



Column : YMC-Pack C8 (5 μ m, 20nm)
150 \times 4.6 mm I.D.

Eluent : A) water/TFA (100/0.1)
B) acetonitrile/TFA (100/0.1)
25-60%B (0-20 min)

Flow rate : 1.0 mL/min

Temperature : 37 $^{\circ}$ C

Detection : UV at 220 nm

Injection : 10 μ L (0.1~0.2 mg/mL)