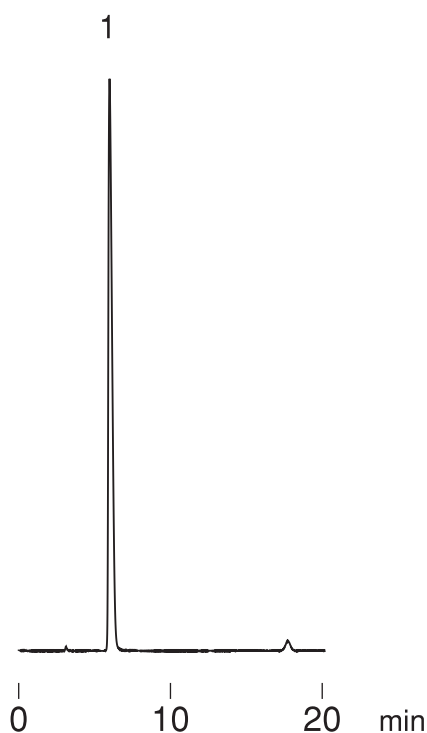


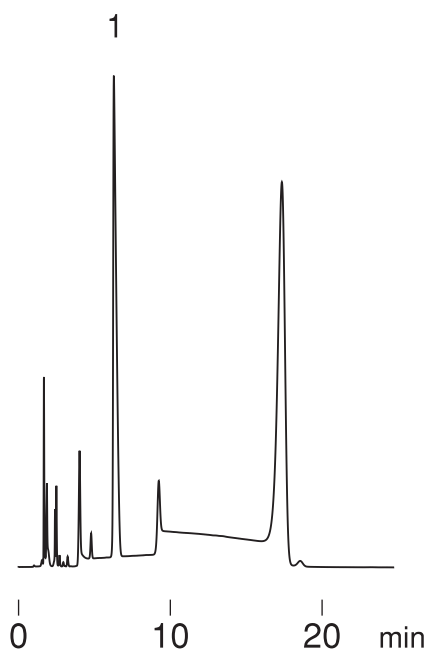
市販ドリンク剤中のタウリン
Taurine in nutritious drink

F001115C

(A) FLS



(B) UV



1. Taurine

Column : Hydrosphere C18 (5 μ m, 12nm)
150 \times 4.6 mm I.D.
Eluent : 10mM KH₂PO₄-K₂HPO₄(pH6.8)/acetonitrile(85/15)
Flow rate : 1.0 mL/min
Temperature : 30 $^{\circ}$ C
Detection : (A)FLS at Ex 345 nm, Em 450 nm
(B)UV at 254 nm, 0.32 AUFS
Injection : 15 μ L
Sample : OPA derivative