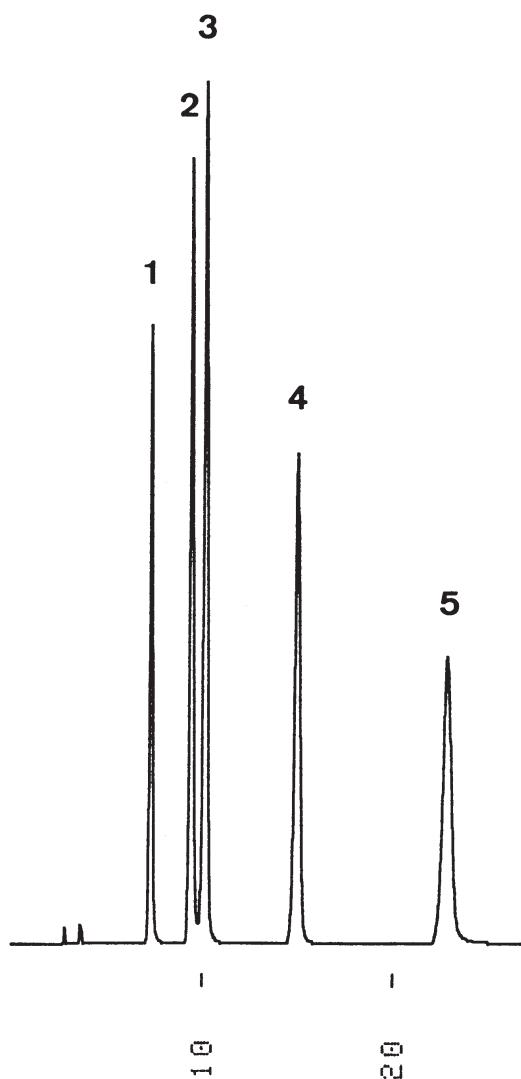


ヌクレオチド
Nucleotides

T920525C



1. 5'-CMP
2. 5'-AMP
3. 5'-UMP
4. 5'-IMP
5. 5'-GMP

Column : YMC-Pack Polyamine II
250 × 4.6 mm I.D.
Eluent : 50mM KH₂PO₄ - H₃PO₄ (pH 3.5)
Flow rate : 1.0 mL/min
Temperature : 40 °C
Detection : UV at 260 nm, 0.16 AUFS
Injection : 10 μL (0.05~0.1 mg/mL)