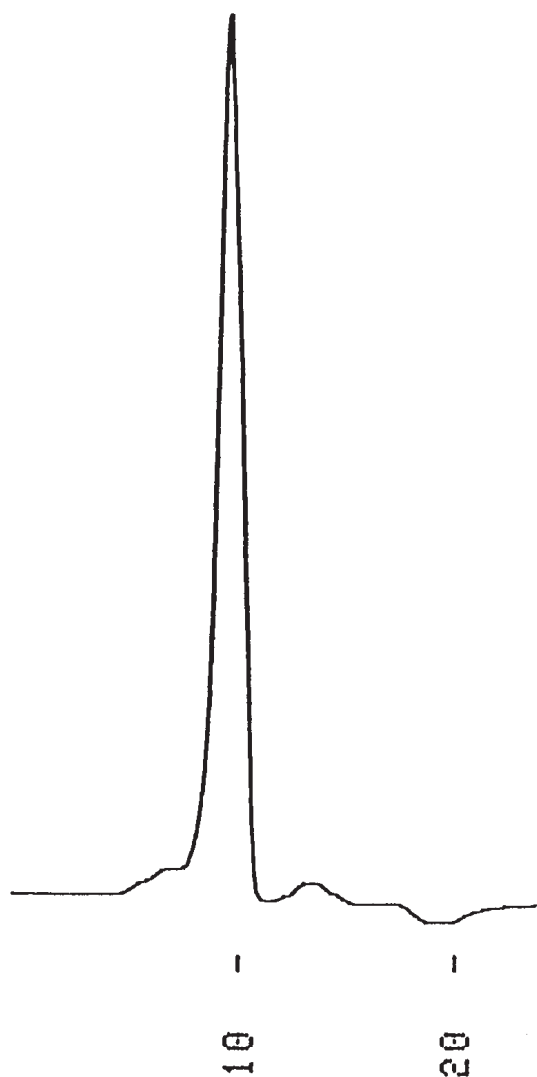


コンドロイチン硫酸 C
Chondroitin sulfate C

G920107D



1.Chondroitin sulfate C, Na salt

Column : YMC-Pack Diol-300
500 × 8.0 mm I.D.
Eluent : water
Flow rate : 1.0 mL/min
Temperature : ambient (24 °C)
Detection : RI, 32×10^{-6} RIU/FS
Injection : 20 μ L (5.0 mg/mL)