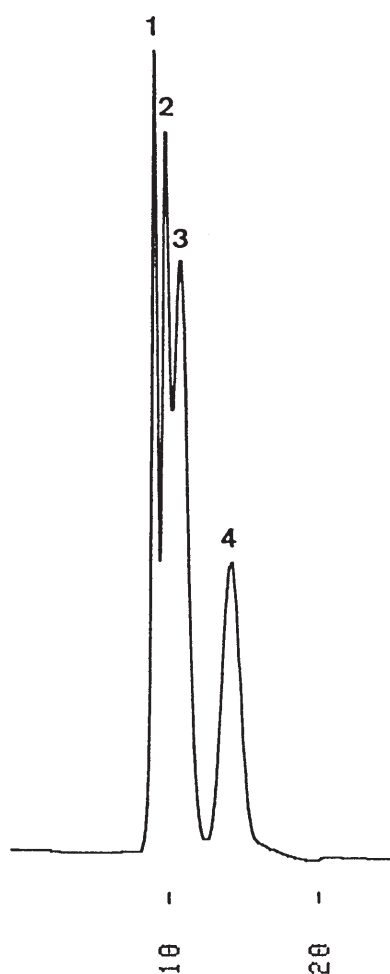


プルラン  
Pullulans

G911216B



1. Pullulan P-800 (MW 853,000)
2. Pullulan P-50 (MW 48,000)
3. Pullulan P-20 (MW 23,700)
4. Pullulan P-5 (MW 5,800)

Column	: YMC-Pack Diol-120 500 × 8.0 mm I.D.
Eluent	: water
Flow rate	: 1.0 mL/min
Temperature	: ambient (24 °C)
Detection	: RI, 16 × 10 <sup>-6</sup> RIU/FS
Injection	: 180 μL (0.25 mg/mL)
Sample	: Shodex STANDARD P-82 manufactured by SHOWA DENKO K.K.