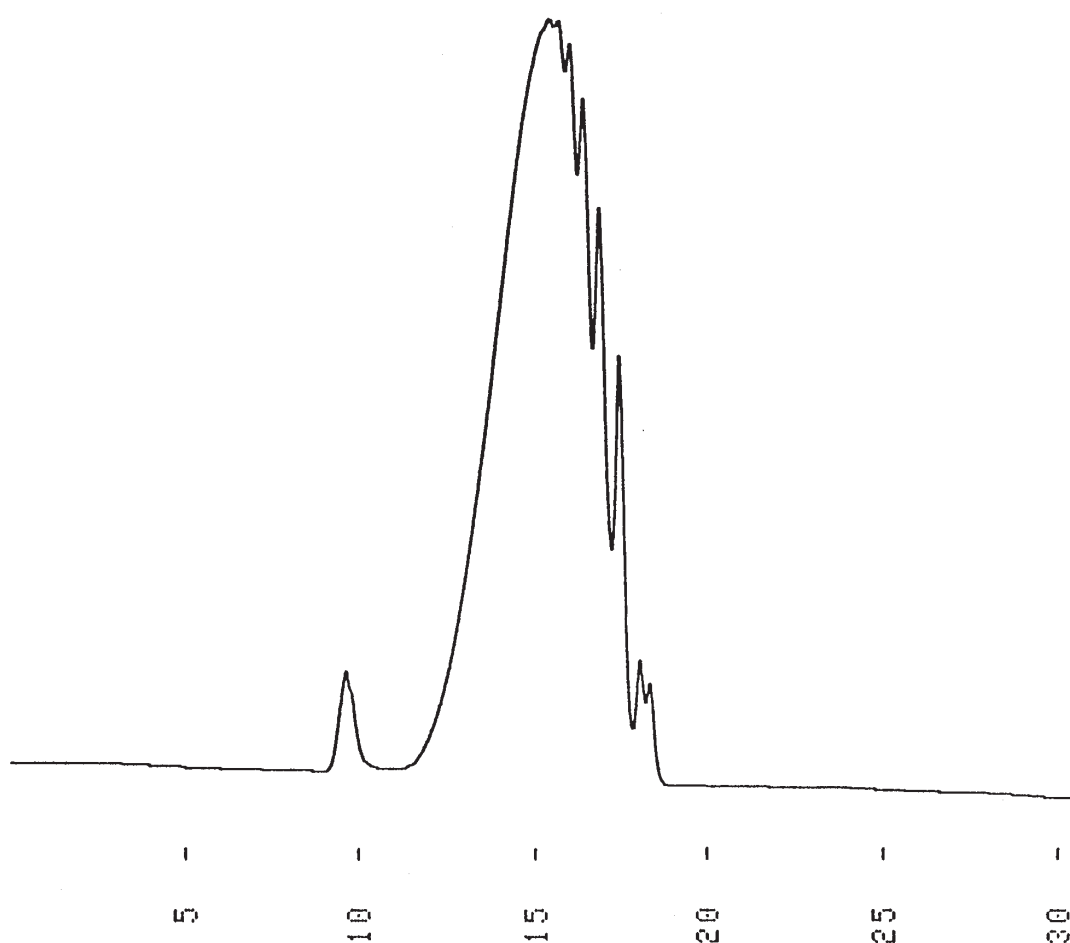


ポリデキストロース
Polydextrose

G911226A

1. Polydextrose II



Column : YMC-Pack Diol-60
500 × 8.0 mm I.D.
Eluent : water
Flow rate : 1.0 mL/min
Temperature : ambient (25 °C)
Detection : RI, 64×10^{-6} RIU/FS
Injection : 40 μ L (25 mg/mL)