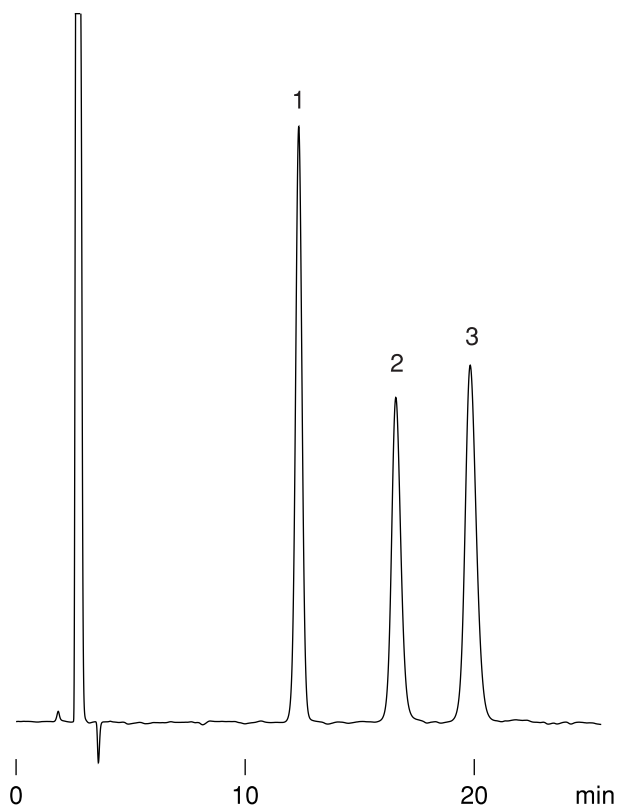


サイクロデキストリン
Cyclodextrins

F030617B

1. α -Cyclodextrin
2. β -Cyclodextrin
3. γ -Cyclodextrin



Column : YMC-Pack Polyamine II
250 × 4.6 mm I.D.
Eluent : acetonitrile/water (60/40)
Flow rate : 1.0 mL/min
Temperature : 25 °C
Detection : RI, 32 × 10⁻⁶ RIU/FS
Injection : 10 μL (0.4~0.5 mg/mL)