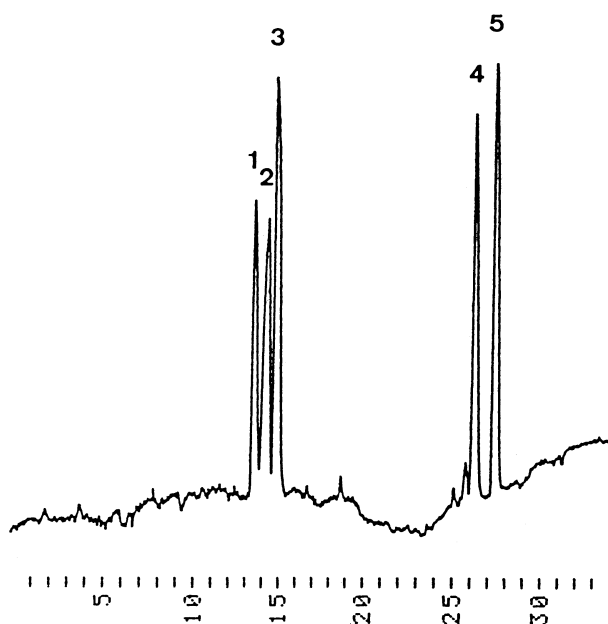


サイクロデキストリン  
Cyclodextrins

M910423A

1.  $\gamma$ -Cyclodextrin
2.  $\alpha$ -Cyclodextrin
3.  $\beta$ -Cyclodextrin
4. O-Dimethyl- $\beta$ -cyclodextrin
5. O-Trimethyl- $\beta$ -cyclodextrin



Column : YMC-Pack ODS-A (5  $\mu$  m, 12nm)  
150  $\times$  4.6 mm I.D.

Eluent : A)water  
B)methanol  
2%B (0-5min), 2-30%B (5-15min, linear),  
30-100%B (15-20min, linear), 100%B (20-30min)

Flow rate : 1.0 mL/min

Temperature : 30  $^{\circ}$ C

Detection : Evaporative Mass Analyzer (ACS Ltd.)  
Temp 150  
Time Constant 5  
PMT 3  
Attenuation 16  
Pressure 20 psi

Injection : 200  $\mu$ L (1.5~15 mg/mL)