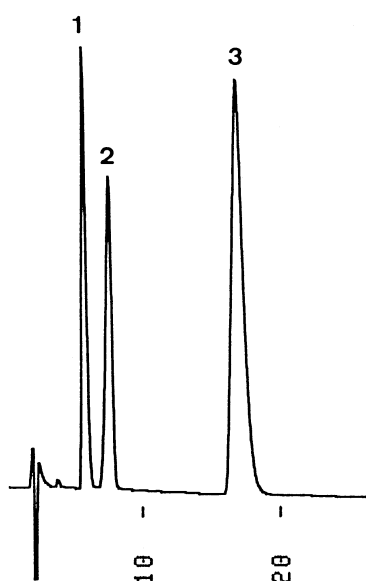


サイクロデキストリン
Cyclodextrins

M910417A

1. γ -Cyclodextrin
2. α -Cyclodextrin
3. β -Cyclodextrin



Column : YMC-Pack ODS-A (5 μ m, 12nm)
150 \times 4.6 mm I.D.
Eluent : methanol/water (7/93)
Flow rate : 1.0 mL/min
Temperature : 30 $^{\circ}$ C
Detection : RI, 32 \times 10⁻⁶ RIU/FS
Injection : 8 μ L (5~15 mg/mL)