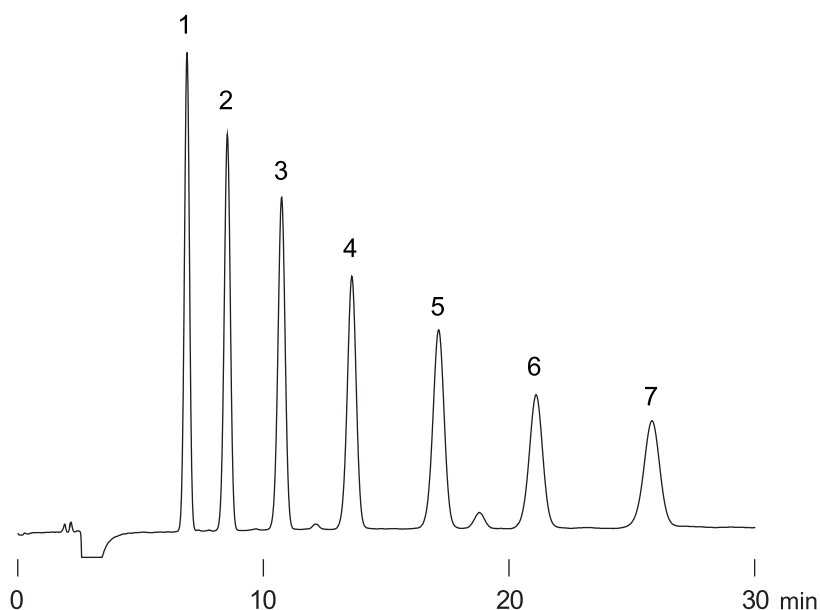


マルトオリゴ糖(G₁~G₇)
Maltooligosaccharides(G₁~G₇)

F030620A

1. Glucose (G₁)
2. Maltose (G₂)
3. Maltotriose (G₃)
4. Maltotetraose (G₄)
5. Maltopentaose (G₅)
6. Maltohexaose (G₆)
7. Maltoheptaose (G₇)



Column : YMC-Pack Polyamine II
250 × 4.6 mm I.D.
Eluent : acetonitrile/water (60/40)
Flow rate : 1.0 mL/min
Temperature : 25°C
Detection : RI, 32 × 10⁻⁶ RIU/FS
Injection : 10 μL (2.4 mg/mL)